

Public Sector Decarbonisation Scheme

Climate Partnership

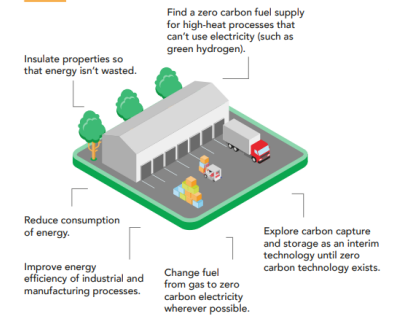
23 November 2023



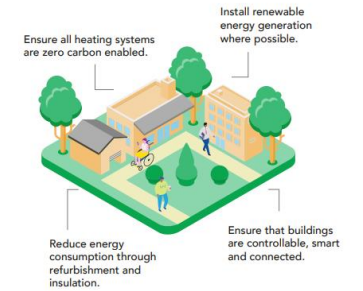
**LIVERPOOL
CITY REGION**
COMBINED AUTHORITY

METRO MAYOR
LIVERPOOL CITY REGION

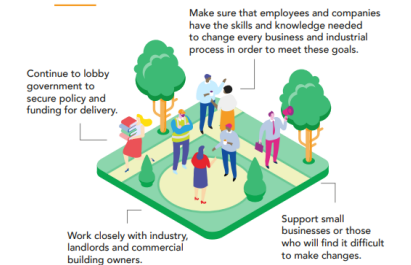
Industrial sites will need to:



Public buildings, offices, leisure and retail buildings will need to:

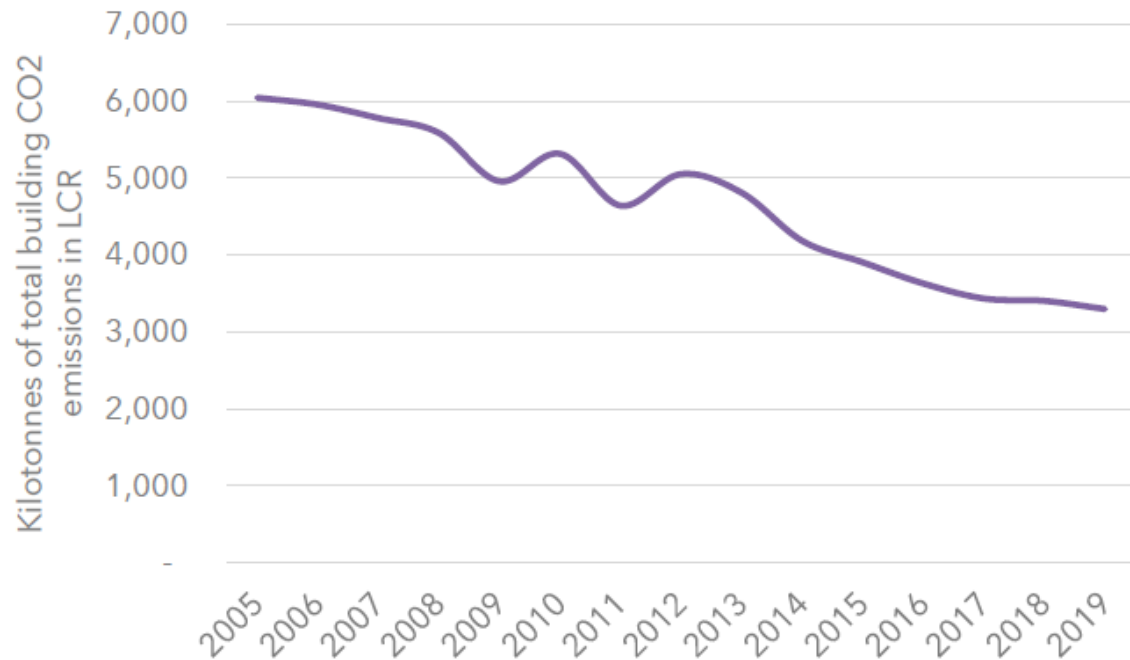


To achieve this we will need to:



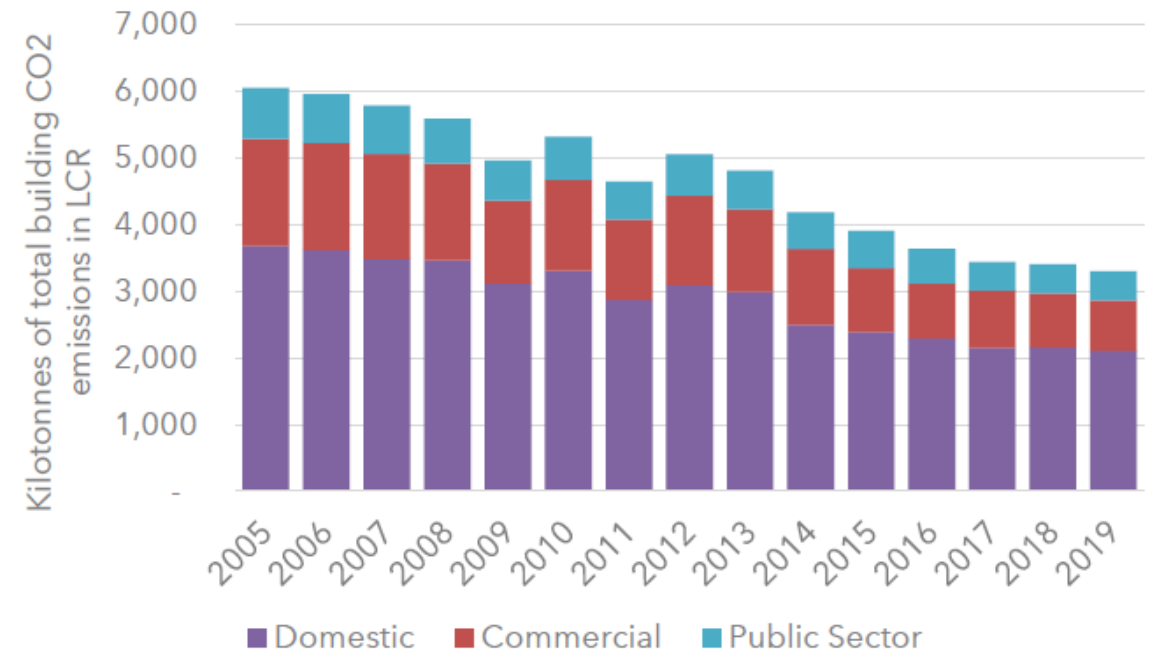
All LCR Buildings Emissions

Kilotonnes of total building CO2 emissions in LCR, 2005-2019



Source: Local Authority Carbon Dioxide Emission Estimates, BEIS

Kilotonnes of total building CO2 emissions in LCR by sector, 2005-2019



Source: Local Authority Carbon Dioxide Emission Estimates, BEIS

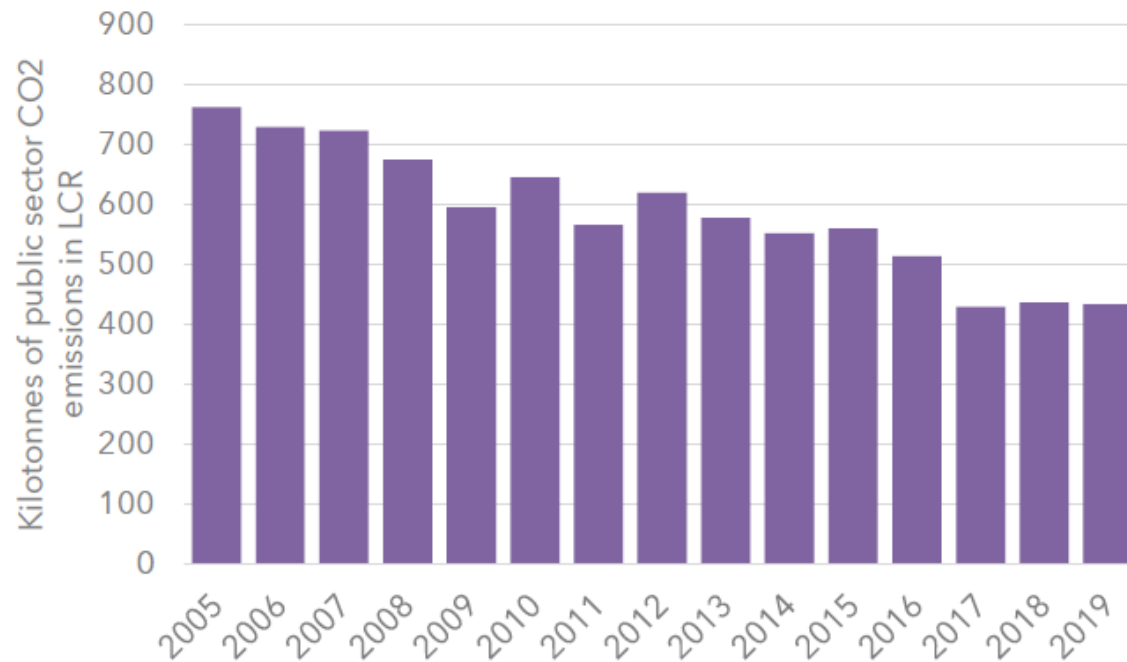
Housing Retrofit Delivery



Programme	Update
LAD2	Programme successfully closed with additional £4m capital, total £15m, in September 2022, delivering 1,336 low income homes with improved energy efficiency.
SWF	£32m grant fund delivered c 2,708 LAD3 homes and a further 142 HUG1 (off-gas) homes.
SHDFw1	8 Registered Provider consortium improved 1,224 homes.
SHDFw2	Granted £31m capital granted to 14 Registered Provider consortium. Target 4,330 homes improved by March 2025.
Solar Together	First campaign successful in delivering photovoltaic panels to almost 600 homes with private investment of £5.5m. Second scheme just closed with 2,500 expressions of interest.
HUG2	Successful in gaining at least £9m grant to improve 500 homes which are not heated by gas. Just appointed local contractor to deliver by March 2025. Home Upgrade Grant Two Liverpool City Region Combined Authority (liverpoolcityregion-ca.gov.uk)
Able to Pay Advice	The Local Energy Advice Demonstrator has granted £366k to Energy Projects Plus to deliver energy efficiency advice across the city region with a focus on targeting those unable to move home from hospital. Estimate c800 homes advised with 180 receiving energy efficiency measures.

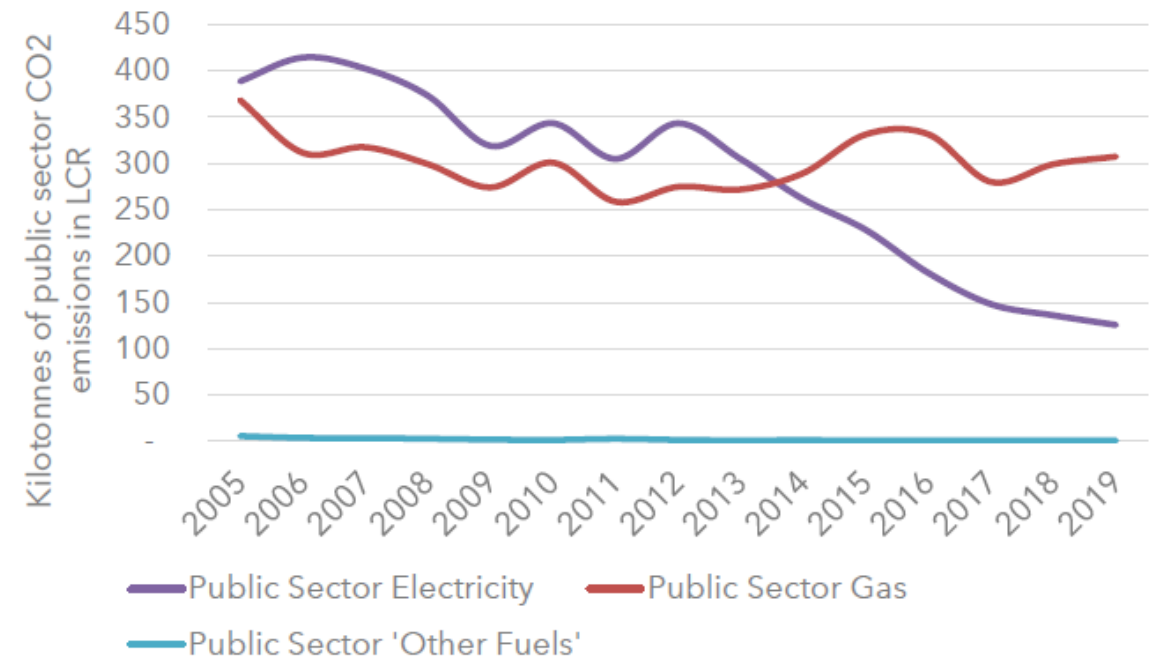
Public Buildings Emissions

Kilotonnes of public sector CO2 emissions in LCR, 2005-2019



Source: Local Authority Carbon Dioxide Emission Estimates, BEIS

Kilotonnes of public sector CO2 emissions in LCR by subsector, 2005-2019



Source: Local Authority Carbon Dioxide Emission Estimates, BEIS

Public Sector Decarbonisation Scheme



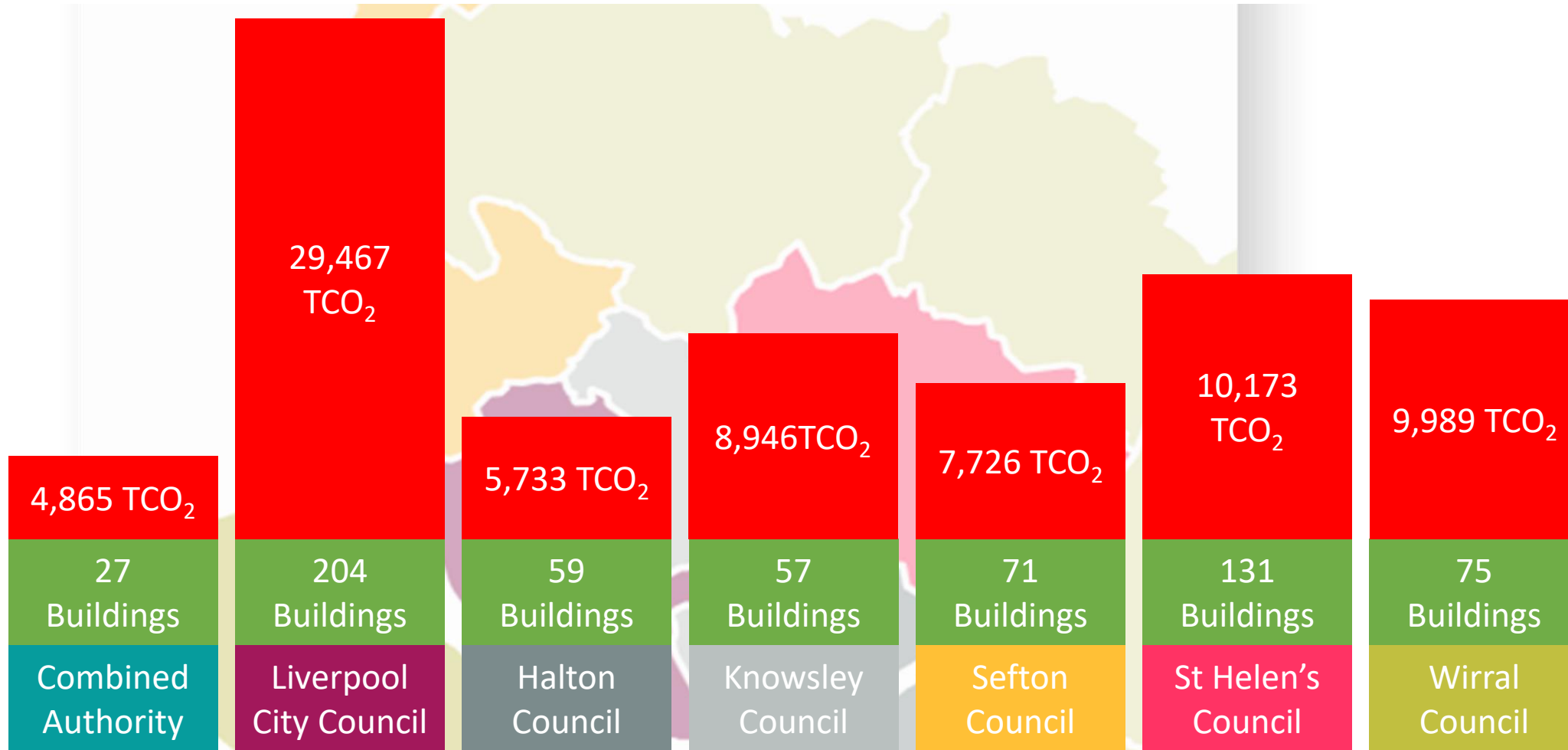
- The PSDS supports the aim of reducing emissions from public sector buildings by 75% by 2037, compared to a 2017 baseline
- Phases 1, 2, 3 have been running since 2020 with £2.5bn funding available
- NW Net Zero Hub for the last year has supported a NW PSDS lead and graduate to support bidding
- Must have match funding to bid
- NW has received less than 5% of funds to date



Public Buildings Operational Emissions

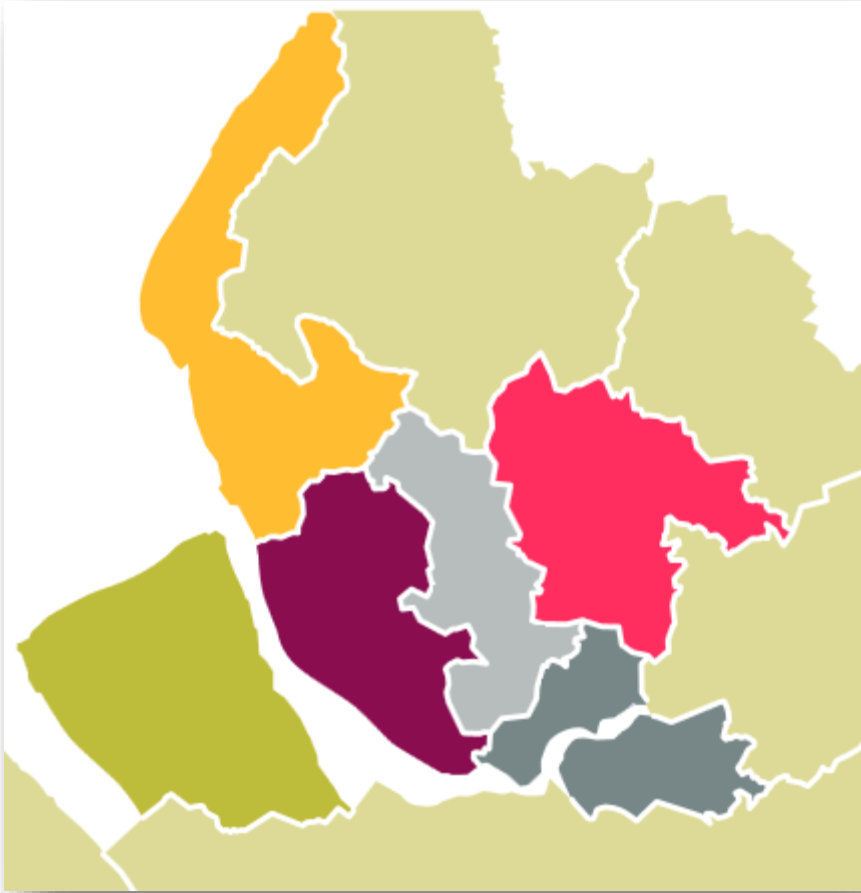


**LIVERPOOL
CITY REGION**
COMBINED AUTHORITY



Public Sector Low Carbon skills Fund Support

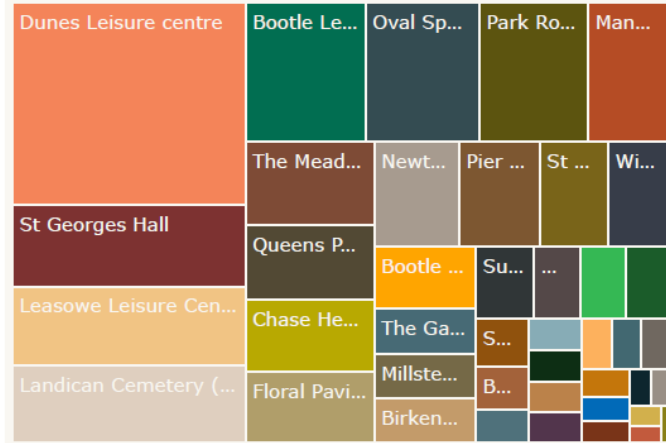
£384,000 fund to examine 52 buildings



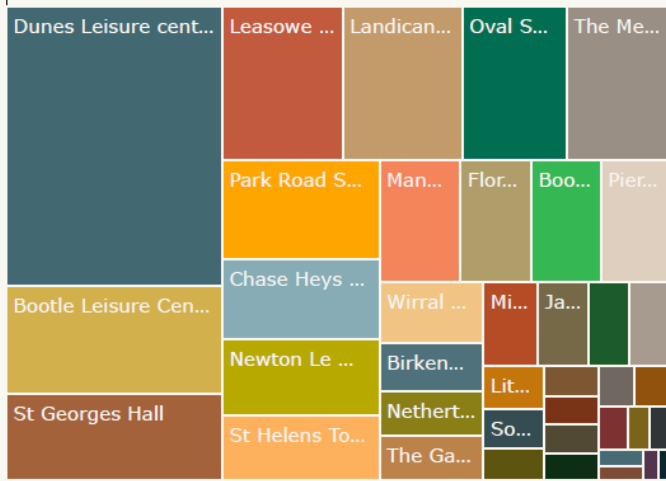
LCR Combined Authority	Liverpool City Council	Wirral Council	St Helens Council	Knowsley Council
18 Buildings	12 Buildings	10 Buildings	9 Buildings	3 buildings
Bus Stations	Civic Buildings	Town Halls	Town Hall	Care Homes
Offices	Libraries	Conference Centre	Offices	Market Building
Mess Rooms	Offices	Sports Facilities	Care Centres	Children's Centre
		Listed Buildings	Leisure Centres	Soccer Centre

Public Sector Decarbonisation Scheme

Energy Consumption



Carbon Emissions



IMPACTS

Energy Savings
(kWh)

21314K



44%

Carbon savings
(tonnes)

4.13K



47%

LCRCA leading a regional bid for PSDS to help fund the decarbonisation of 38 sites across the region.

Partnering with Councils - Knowsley, Liverpool, Sefton, St Helens, Wirral alongside the CA Estate to drive change.

~£40m
Programme

~£34m Grant
Application

UKIB Loan
Funding

salix

Next Steps

- Outcome of PSDS bid known in early 2024
- Procurement work in advance of outcome of bid
- Solar opportunities on Local Authority buildings and land
- Low Carbon Skills Fund round in early 2024 for next tranche of buildings
- Ambition of next round of PSDS funding in 2024

