



north west
net zero hub

Delivery of Low Carbon Skill Fund Decarbonisation Plans for Liverpool City Region



**LIVERPOOL
CITY REGION**
COMBINED AUTHORITY

METROMAYOR
LIVERPOOL CITY REGION

Low Carbon Skills Fund LCRCA Programme

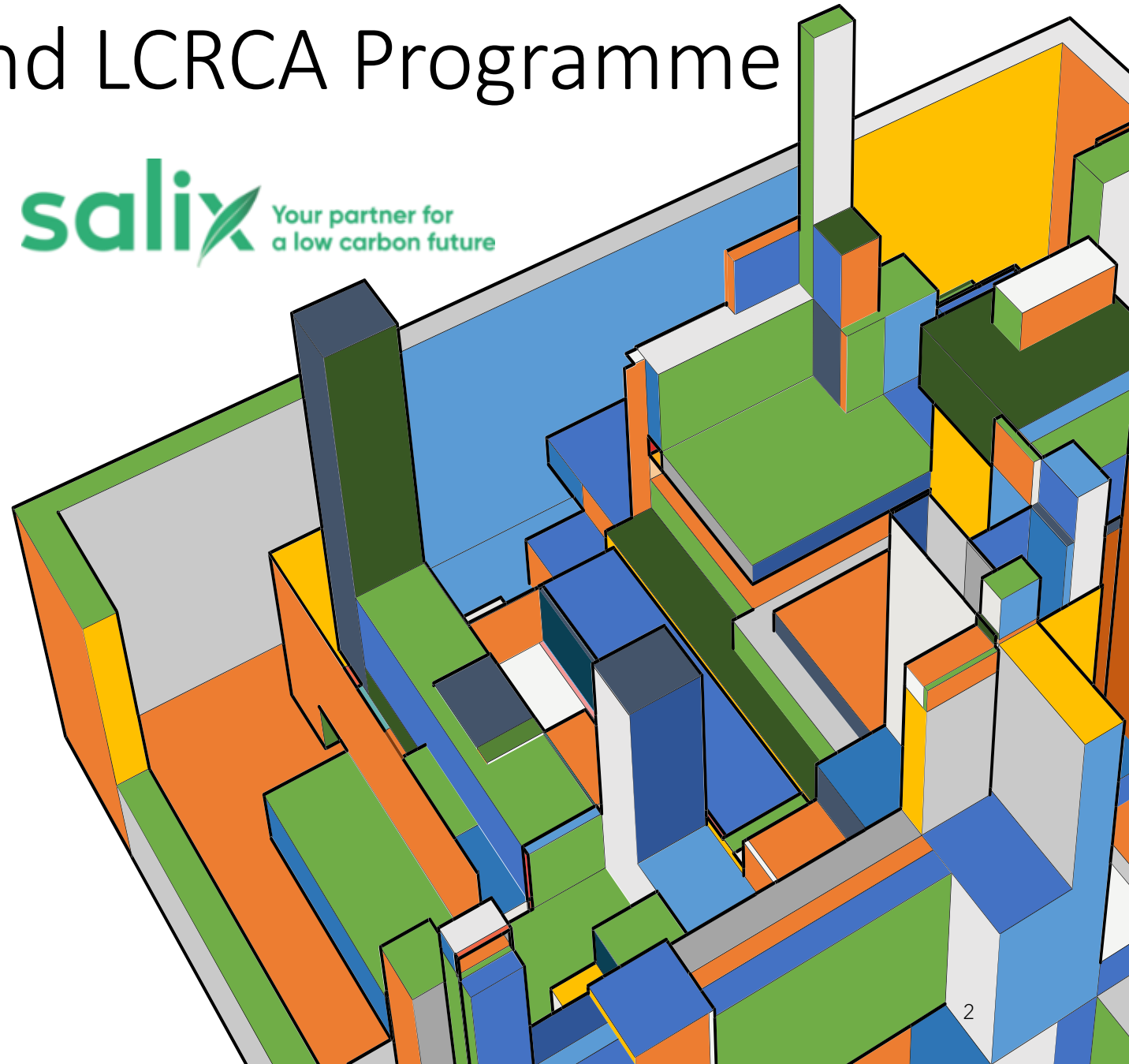
Revenue Funding

Heat Decarbonisation Plans

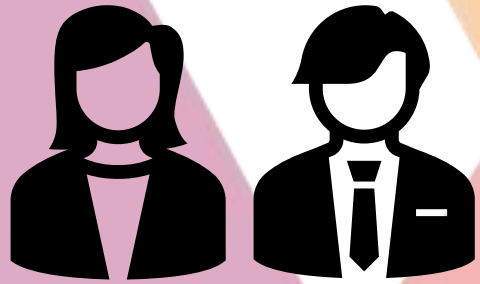
Project planning & Priorities

Readiness for PSDS

2023 Funding Call



Lead Contact for the project



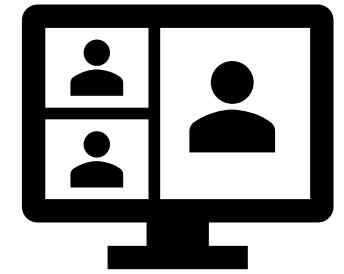
Technical plans and data from each building



Collaboration in planning and delivery



Participation in meetings



Requirements from partners



Sefton Council



Knowsley Council



Liverpool City Council



ST HELENS
BOROUGH COUNCIL

WIRRAL



LIVERPOOL CITY REGION
COMBINED AUTHORITY

METROMAYOR
LIVERPOOL CITY REGION



north west
net zero hub

Heat Decarbonisation Plan Process Map



Asset Data Analysis

Data support with Energy & Carbon Toolkit

Net Zero Options

Technical Feasibility requirements for the assets and project pathway development

Project Planning

Site specific assessment and technical feasibility study

Design

Investment Case

Business and Financial Investment Case

Communication and Access Arrangements

Working group meetings

Consultant management

Technical review

Report Checking

Knowledge sharing and Building

Partner meetings



Point of Contact



Report Reviews



Share learnings



METROMAYOR
LIVERPOOL CITY REGION



Public Sector Low Carbon skills Fund Support

£384,000 fund to examine 52 buildings emitting 7,717 tCO₂



Liverpool Combined Authority	Liverpool City Council	Wirral Council	St Helens Council	Knowsley Council
18 Buildings	12 Buildings	10 Buildings	9 Buildings	3 buildings
Bus Stations	Civic Buildings	Town Halls	Town Hall	Care Homes
Offices	Libraries	Conference Centre	Offices	Market Building
Mess Rooms	Offices	Sports Facilities	Care Centres	Children's Centre
		Listed Buildings	Leisure Centres	Soccer Centre

Public Sector Decarbonisation Scheme (PSDS)



Heat and wider decarbonisation

£1.2m Energy cost savings

7.7k tonnes CO₂ modelled in plans

Aggregated benefits and collaborative programme

Progressing towards a combined programme

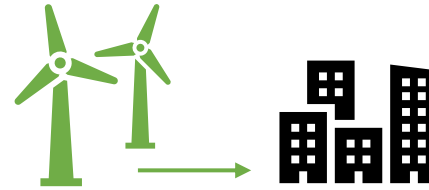
Decarbonisation Project Summary



45 GWh energy
£7.2m, 7,717 t CO₂



1.5 MWp
Renewable Generation



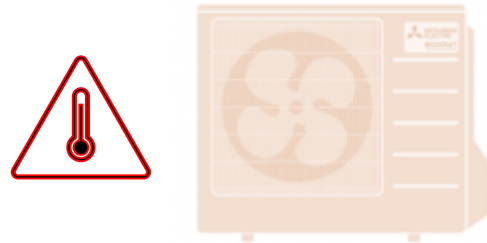
23.7 GWh
~3,000 t CO₂



Energy Efficiency
Options



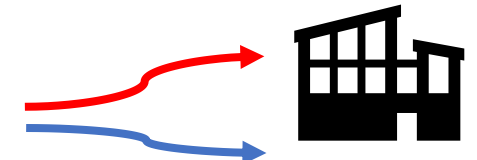
LED Lighting Replacement



Heat Pump



Building measures & HP



District Heating
Connections

A Credible, Competent Capacity to Support Net Zero Transition

Challenges and Issues

- Consultant
- Out-dated output requirements from Salix
- Time
- Technical ability
- Outputs



©Derek Young Photography



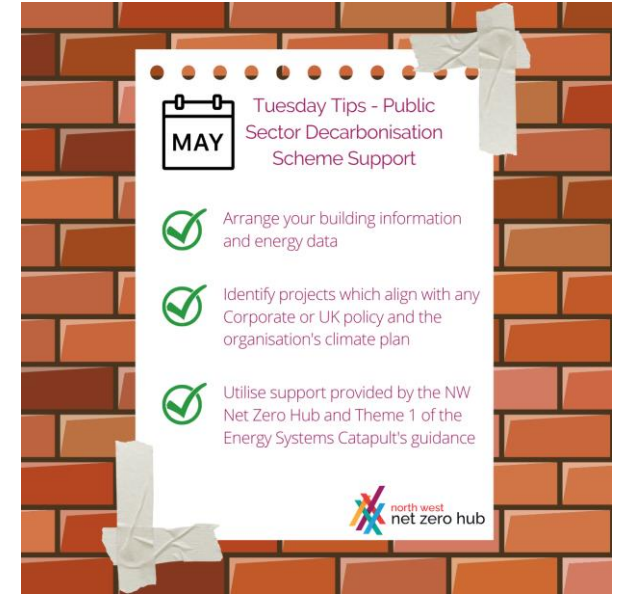
Decarbonisation Plan Review

- Repetitive and standard
- Insufficient detail
- Low level of analysis
- Missed measures
- Not Carbon coherent
- Poorly referenced materials
- Salix elements missing
- Lack of QA



Lessons

- Mobilise early
- Have managed contractor/partner sessions
- Build evidence early
- Have very strict deliverable schedules
- Verify outputs
- Obtain modifiable assessment & calculation sheets
- Ensure technical assessments are fully addressed
- Get draft plans early



Funder Support

- Monthly progress sessions
- Assigned contact from Salix
- Flexibility
- Project support
- Active feedback

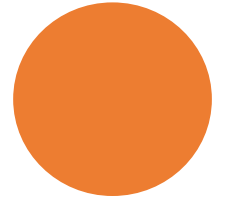
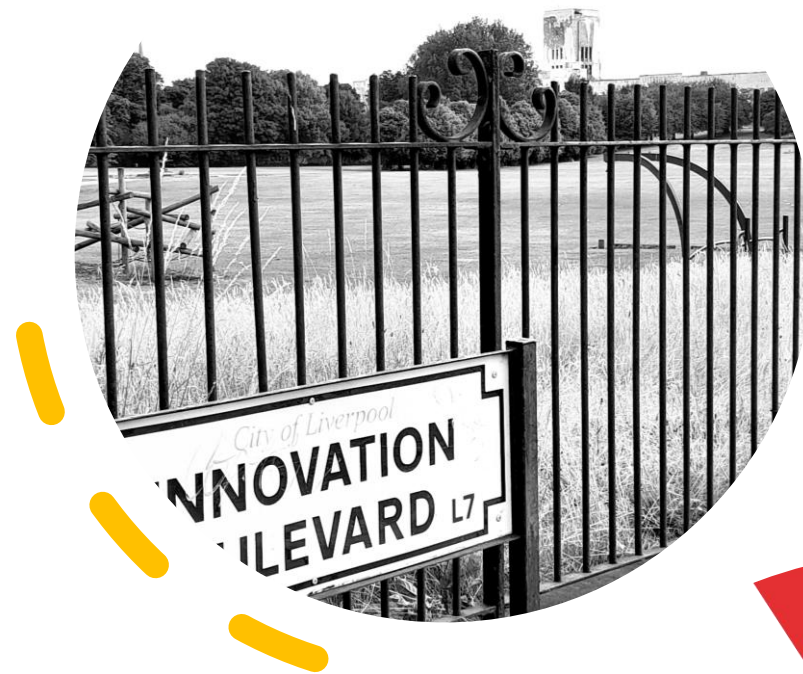
The Salix logo is displayed in white text on a dark purple rectangular background. The word "salix" is in a lowercase, sans-serif font, with a stylized leaf icon to the right of the 'x'.

METROMAYOR
LIVERPOOL CITY REGION



Benefits

- Value for money
- Streamlined process
- Consistent approach
- Resource efficient
- Pipeline to PSDS
- Really positive working partnership



Next Steps

Scale and repeat!

Innovate on execution and outputs

Aggregate opportunities

Improve supply chain

