

Investing in Nature in the Liverpool City Region

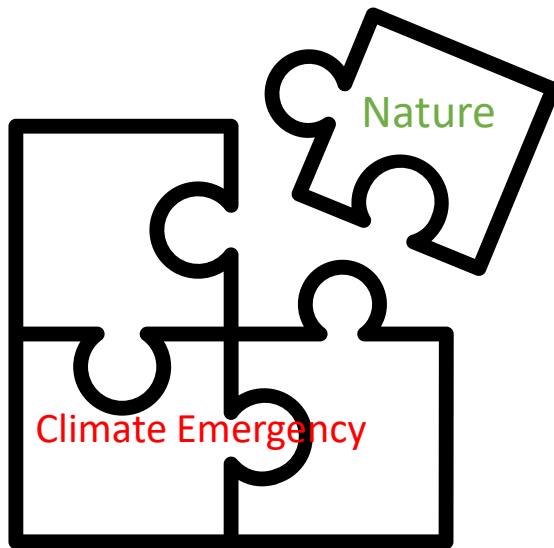
NEIRF project
Rachael Rhodes
20/07/23



Environmental
Advisory Service

Working with local authorities for a clean, green, prosperous and resilient Liverpool City Region

Nature and climate emergencies

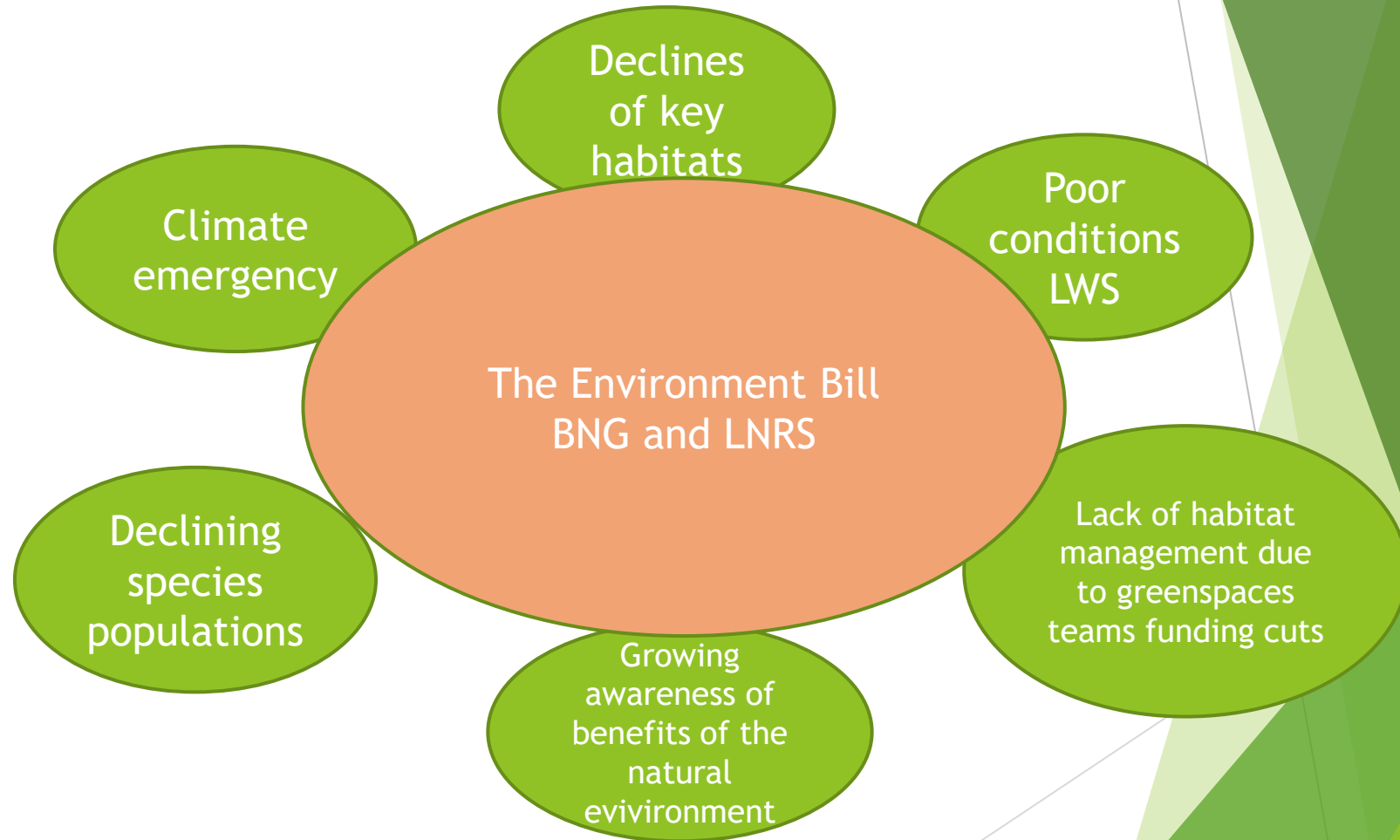


Environmental
Advisory Service



Working with local authorities for a clean, green, prosperous and resilient Liverpool City Region

Background and drivers to the project



Investing in Nature in the Liverpool City Region Fund (NEIRF fund)

Aim: to develop a Nature Based Investment Model for the LCR,

- ← to facilitate implementation of BNG through development of an online habitat bank
- ← To provide a vehicle for the delivery of the Local Nature Recovery Strategy
- ← To provide wider benefits for nature within the LCR, e.g. LWS and species recovery.
- ← To provide wider ecosystem services and address climate emergencies, e.g. carbon sequestration, communities access to nature, nature based flood alleviation.

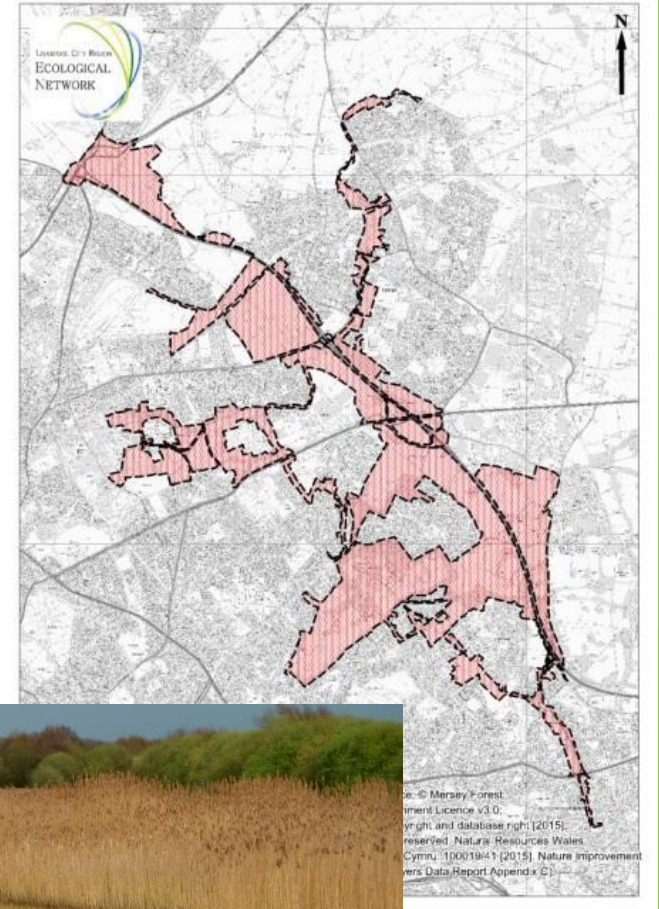


Environmental
Advisory Service

Working with local authorities for a clean, green, prosperous and resilient Liverpool City Region

Liverpool City Region Nature Improvement Areas Habitat Banking bid

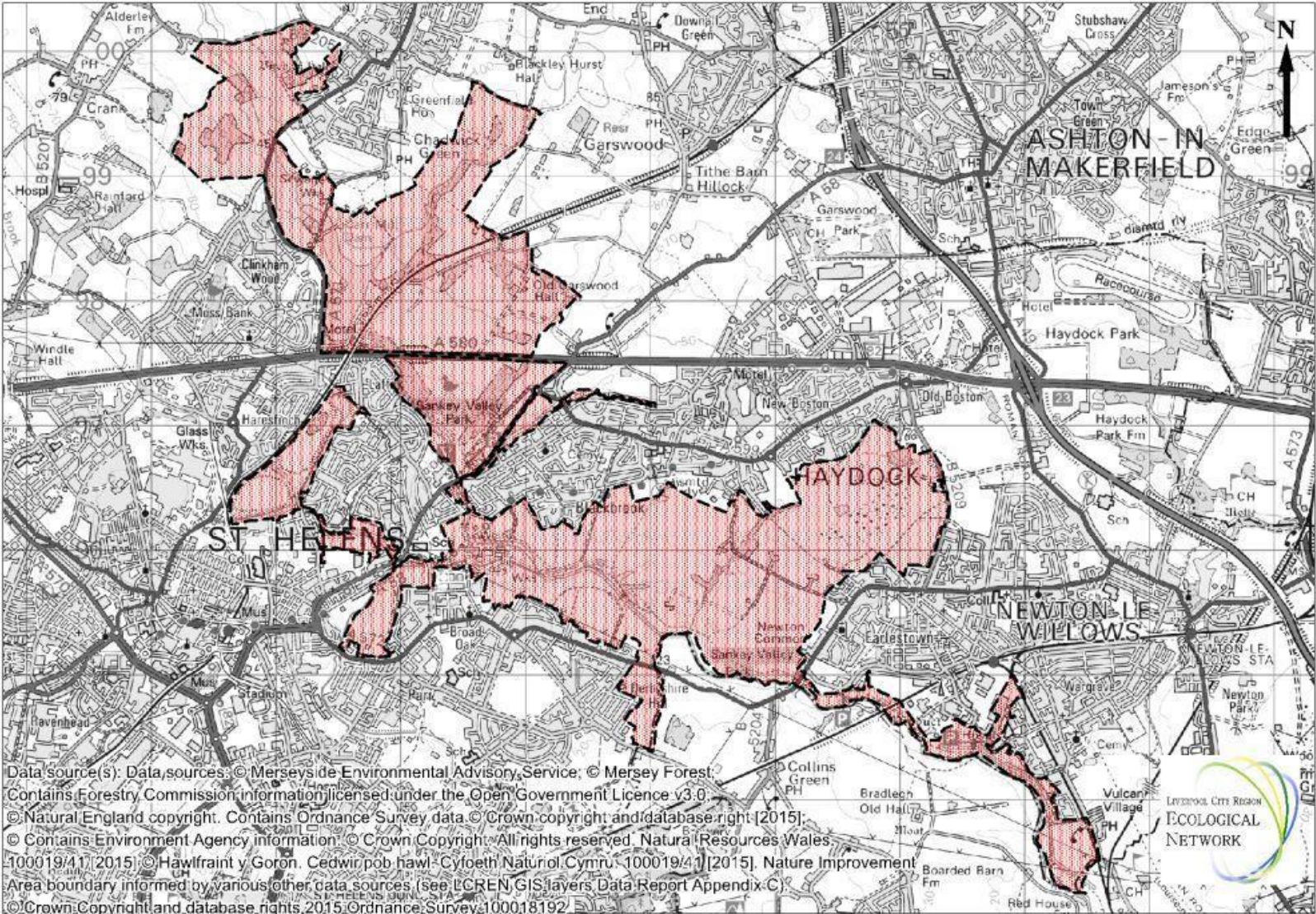
- Focus on 3 pilot NIA areas across the LCR.
 - River Alt and M57 corridor NIA
 - River Alt Corridor NIA
 - Black Brook and Sankey Valley NIA
- (<http://www.lcreconet.uk/>)
- Explore and identify habitat creation and restoration opportunities within the pilot NIA areas to support implementation of biodiversity net gain.
 - Through the use of the innovative LCR Natural Capital Baseline tool the project will identify where habitat delivery options can achieve wider natural capital benefits



Environmental
Advisory Service

Working with local authorities for a clean, green, prosperous and resilient Liverpool City Region

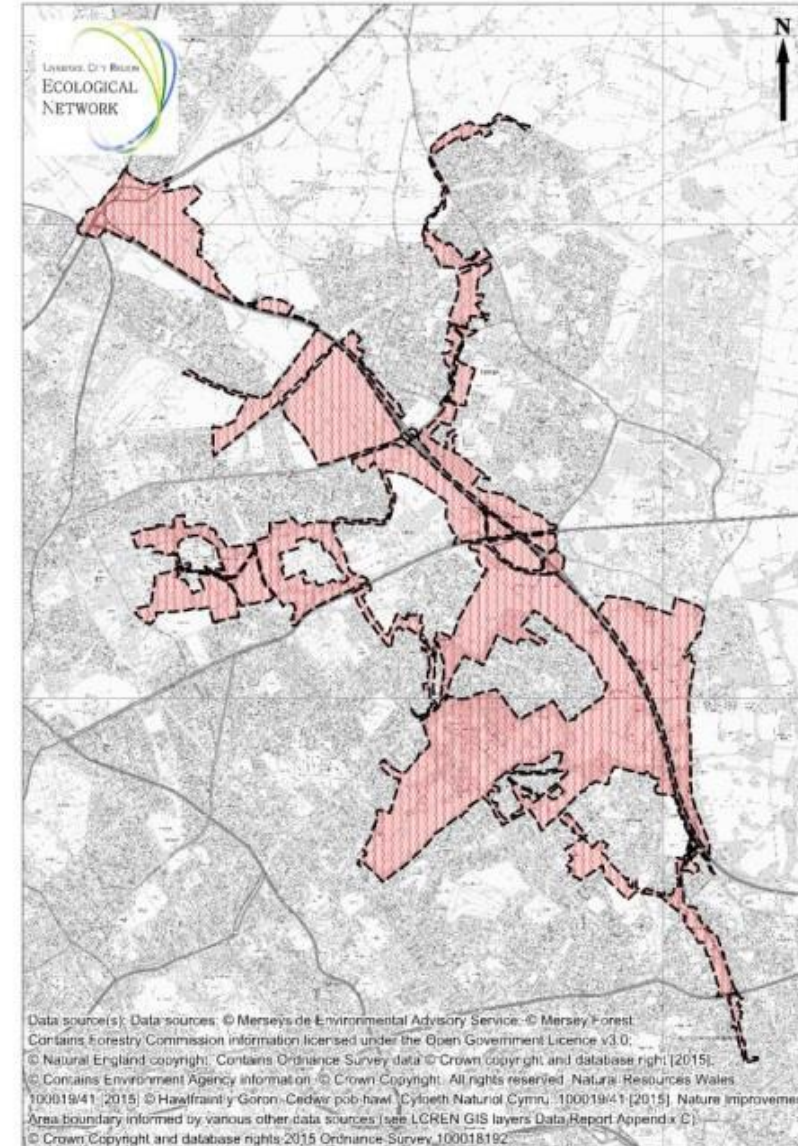
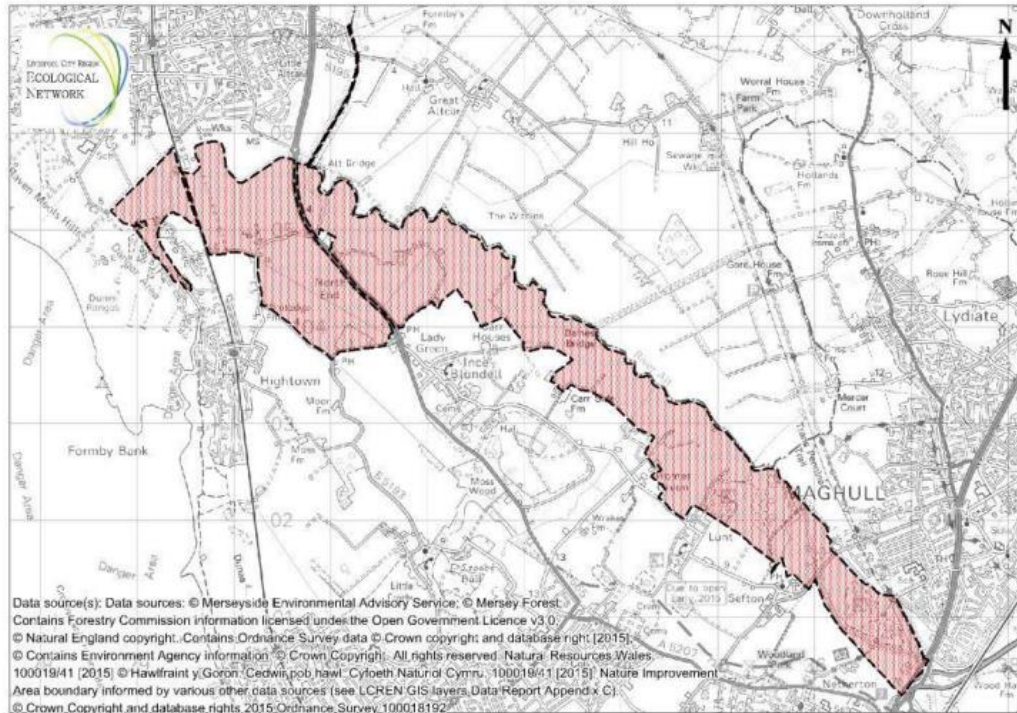
Black Brook and Sankey Valley NIA



Two River Alt NIA areas

River Alt M57 corridor

River Alt Corridor



LCR Nature Improvement Areas Habitat Banking bid

To develop a new habitat banking model to deliver Biodiversity and Environmental Net Gain

- ← Consultant looking at ‘seller’ side - revenue streams such as BNG, carbon credits, nature based solutions
- ← Consultant looking at ‘investment’ side - how to attract investors to habitat delivery, profiling investors, looking for potential local investors
- ← Identify habitat creation and restoration opportunities within the NIA’s
- ← LJMU - Natural Capital baselining work to assess where additional natural capital benefits could be achieved



Environmental
Advisory Service

Working with local authorities for a clean, green, prosperous and resilient Liverpool City Region

Partnership approach

- ← Project has worked with a Local Authorities as well as regional partners including LWT, Mersey Rivers Trust, Groundwork, Mersey Forest, EA
- ← We are looking for projects within the pilot NIA areas to put through the project.



Environmental
Advisory Service



Working with local authorities for a clean, green, prosperous and resilient Liverpool City Region

Outputs

- ▶ Tool kit to develop nature recovery habitat projects. To include:
 - ▶ Sellers pack - how to package projects to allow sale e.g. BNG or carbon credits
 - ▶ Investment business plan - how to attract investment and finance
 - ▶ Habitat banking platform - online platform to connect sellers and buyers
 - ▶ Proof of concept
 - ▶ Stepping stone to wider LCR nature recovery ambitions and LNRS implementation.

Thank you

For more information contact
Rachael.Rhodes@eas.sefton.gov.uk



Environmental
Advisory Service

Working with local authorities for a clean, green, prosperous and resilient Liverpool City Region