

Liverpool City Region Spatial Development Strategy



Integrated Impact Assessment



**LIVERPOOL
CITY REGION**
COMBINED AUTHORITY

METROMAYOR
LIVERPOOL CITY REGION

Key Issues Summary

AECOM Imagine it.
Delivered.

October 2020



AECOM Imagine it.
Delivered.



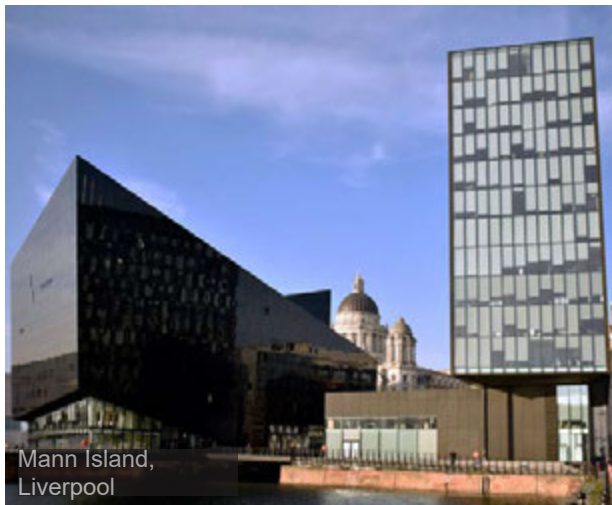
Dream (sculpture),
St Helens



Ainsdale Beach,
Sefton



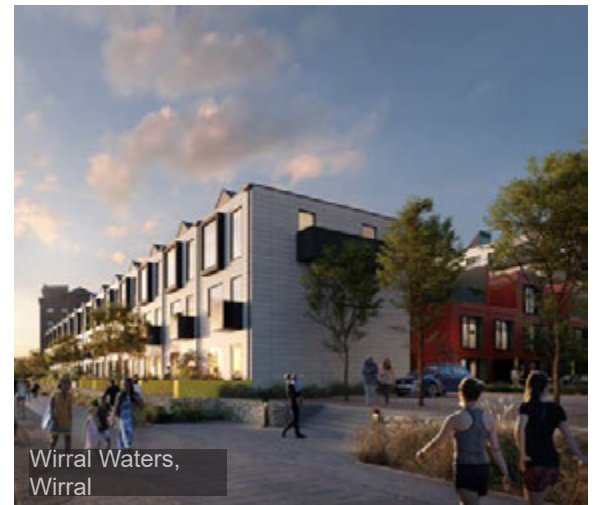
Shakespeare North,
Knowsley



Mann Island,
Liverpool



River Weaver,
Halton



Wirral Waters,
Wirral

Introduction

Liverpool City Region Combined Authority are preparing a Spatial Development Strategy. This is a Plan for the City Region that transcends boundaries between the local authorities of Liverpool, Sefton, Wirral, Knowsley, Halton and St Helens. A key aim of the Plan is to achieve a sustainable economy, which reduces social inequalities and tackles key issues such as climate change. The Plan will set out sustainable growth opportunities (for homes, jobs, renewable energy and so on), whilst also seeking to protect the City Region’s important assets. An Impact Assessment is being undertaken alongside the plan to make sure that the approach taken takes consideration of the environment,

peoples’ health and wellbeing, equalities and economic factors. An important step in an impact assessment is to understand what the key issues are for the Plan area. This allows an understanding of how things might be if no action is taken and provides the basis for assessing what impacts the Plan could have.

This summary provides an overview of the key issues that have been identified through the impact assessment so far.

It concludes with a list of ‘objectives’ which we propose to use to test the plan. We have also identified the types of approaches that are likely to create positive effects.



Dazzle Ferry, Liverpool



Lighthouse, Wirral

Contents

- Introduction 1
- Climatic Issues and Natural Resources 2
- Deprivation, Economic Growth and Minority Groups 3
- Transport, Air Quality and Housing 4
- Biodiversity and Water Quality Resources 5
- Historic Environment, Culture and Landscape 6
- How will we test the plan? 7

Climatic Issues and Natural Resources



Liverpool City Region needs to prepare for anticipated changes in climate such as hotter, drier summers, wetter winters and more extreme weather events. It is also crucial that the City Region continues efforts to reduce the causes of climate change (greenhouse gas emissions) and to protect natural resources. This includes through the productive use of high quality agricultural land, safeguarding of minerals, reducing waste, recycling more and taking opportunities for low carbon energy generation.

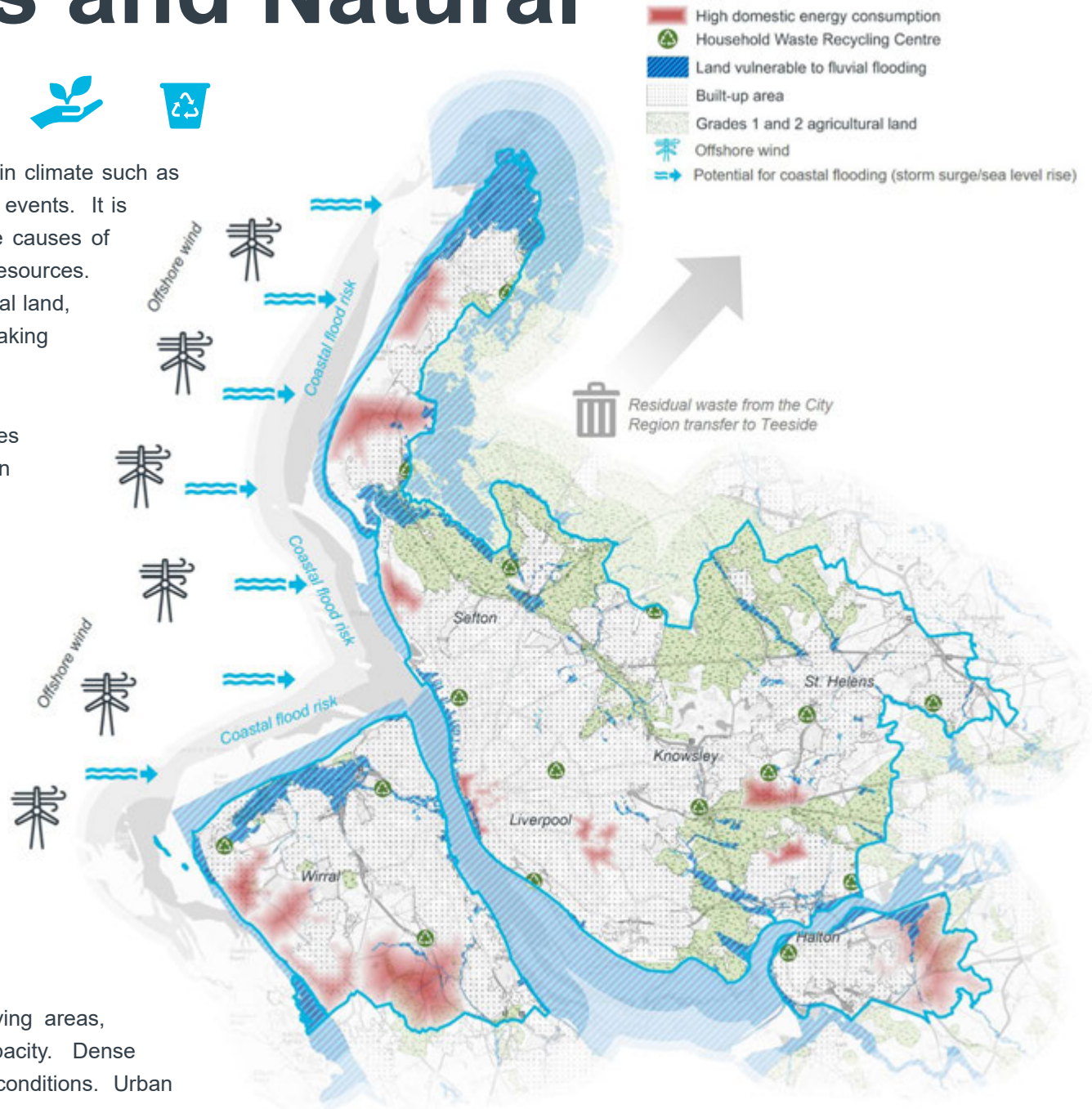
The LCR has ambitious emissions reduction targets, and generates energy from a range of renewable sources. **45%** of this generation comes from **offshore wind**

Carbon emissions from **transport** is a continuing issue across the City Region for all authorities. Rates of carbon emissions per person vary across the LCR, with the highest averages in St Helens and Halton and Liverpool and Wirral with the lowest averages.

Most of the highest quality **agricultural land** is found in the north and east of the city region, with smaller pockets scattered across the rural areas.

Areas in Halton and Sefton produce higher levels of **domestic waste** per household, whilst overall, Liverpool has the lowest recycling rates.

Flood risk is concentrated around inland watercourses, low-lying areas, coastal areas and built-up areas without sufficient drainage capacity. Dense urban areas are more likely to feel the impacts of **extreme heat** conditions. Urban 'greening' is helpful in this respect.



Deprivation, Economic Growth and Minority Groups



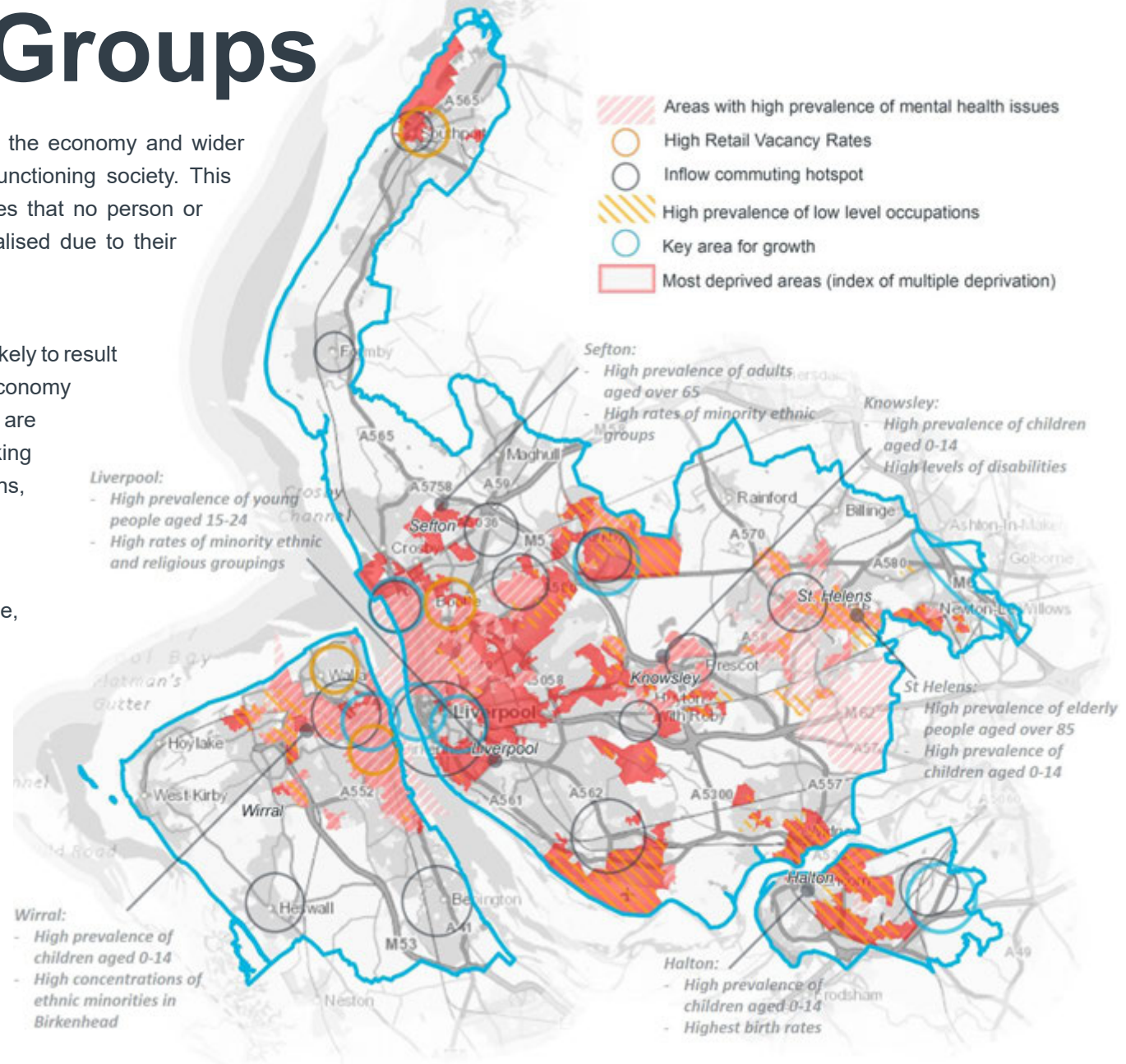
Economic growth must be ensured in order to protect jobs, the economy and wider social and environmental infrastructures which support a functioning society. This growth must be delivered in an equitable way which ensures that no person or group is disproportionately affected by decisions or marginalised due to their status; for example age, gender, ethnicity or religion.

Brexit and the economic and social fallouts from Covid-19 are likely to result in significant changes to how the Liverpool City Region's economy functions. The likely impacts over the short to medium term are a reduction in economic growth, high unemployment, rethinking the use of town and city centres and altered trading patterns, including the potential for the reintroduction of 'free ports'.

Key City Region drivers of growth: manufacturing, real estate, human health and social work sectors

47% of the Liverpool City Region's small geographical areas are classified as within the most 10% of deprived areas nationwide

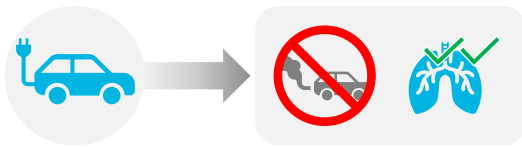
Deprived communities in the city region are broadly clustered in the more built-up areas, with the largest concentrations found in **Liverpool**



Transport, Air Quality and Housing

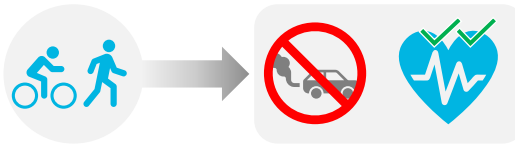


How easily people can move around the City Region is very important, as is the method of travel that is chosen. There is a clear need for increased walking, cycling and public transport usage in the City Region. Poor air quality is often a result of the overuse of motorvehicles and is detrimental to human health. Housing is a key aspect of well designed places, its location, type and quality have the capacity to affect social, economic and environmental outcomes.



Increased numbers of electric vehicles will reduce air pollution issues and improve health outcomes

Increased active travel rates will reduce air pollution issues and improve health outcomes



Air quality issues are common in **deprived areas**

Transport related **carbon emissions** are problematic within the City Region.

Active travel rates are highest in the **urban centres** of the City Region

On average, across all of the Liverpool City Region Local Authorities over the past decade housing delivery targets have not been consistently met. However there is a significant amount of fluctuation between years and authorities.

House prices are generally **higher** in the more **rural areas** of the City Region.

- Decreased Traffic Rates
- Increased Traffic Rates
- Port
- Airport
- Air Quality Management Area
- Railway Station
- Railway
- Motorway Junction
- Strategic Road Network
- Congestion Issues
- Higher than average house prices
- High rates of active travel



Biodiversity and Water Quality Resources



The Liverpool City Region has lots of important wildlife habitats and species, many of which are protected by international and national regulations. Coastal environments are particularly important to the region, including the River Mersey, River Dee and Liverpool Bay. Habitats and species can be affected by recreation, water pollution, water abstraction and urbanisation.

The **NW** is **not** generally a **water-strained region**. However poorly planned development could potentially lead to unsustainable pressure on water.

The **quality of watercourses** across the region is **mixed**, but the majority are classified as either **moderate** or **good**. However, there are still areas where **poor quality** is recorded.

7 bathing locations across the Liverpool City Region are classified as either **excellent** or **good** status

More than **50%** of nationally protected habitats (SSSIs) are in an unfavourable condition, although some are recovering.



Historic Environment, Culture and Landscape

Historic Environment, Culture and Landscape



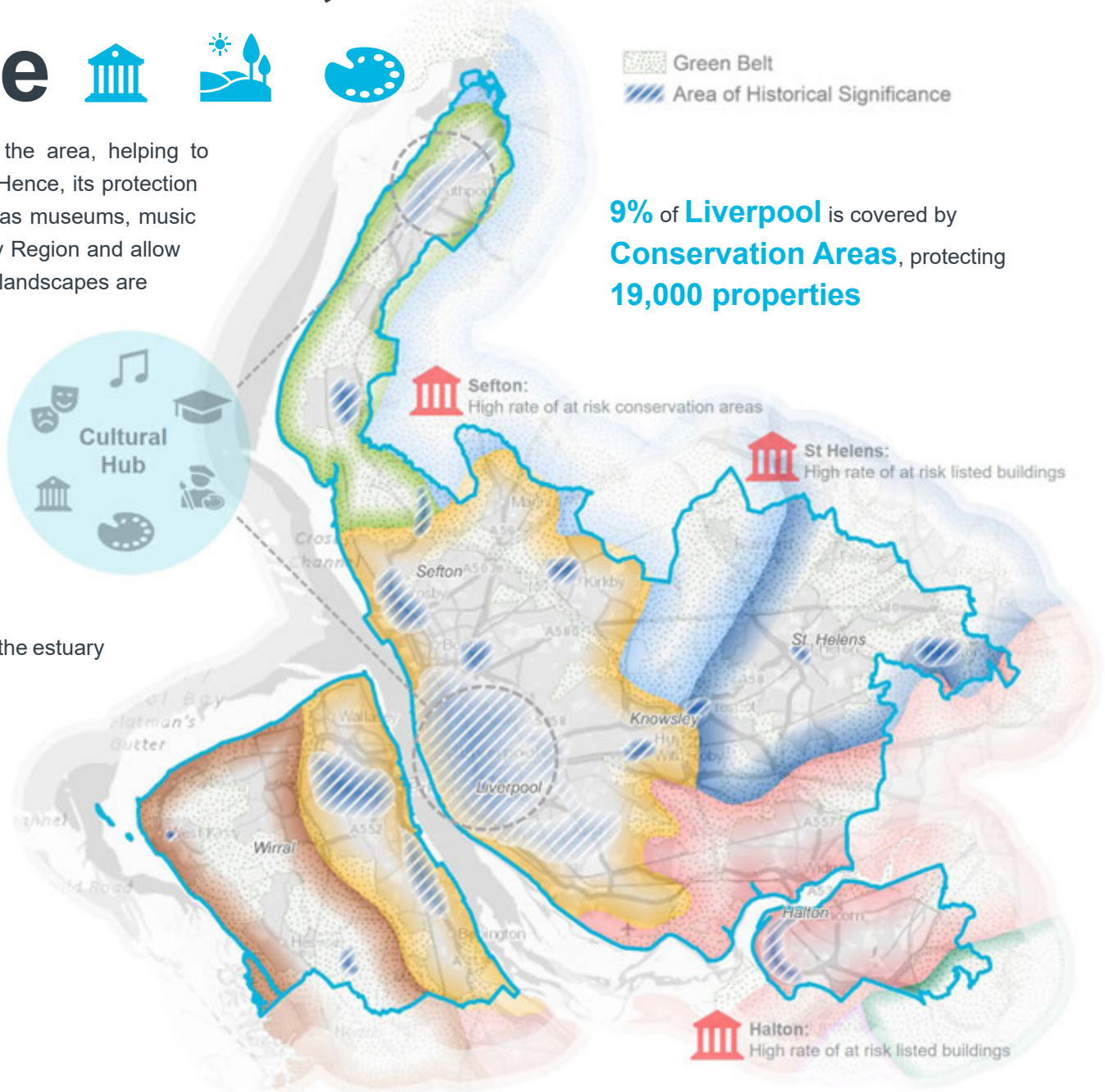
The Liverpool City Region's rich heritage is a key asset for the area, helping to contribute towards a sense of place, community and character. Hence, its protection and enhancement are of vital importance. Cultural assets such as museums, music venues and educational institutions act as pull factors to the City Region and allow it to stand out on the world stage. The area's distinct and varied landscapes are important to protect in order to retain local character, both in terms of natural and man-made assets.

National character Areas

- Predominantly agricultural land with field patterns
- Industrial heritage, farmland and urban centres
- Coastal land with sand dunes and conifer plantations
- Built-up and industrial with rich heritage and habitats along the estuary
- Coastal scenery, villages, grazing land and ridges
- River valley with farmland, industry and urban areas

Conservation Areas:

Halton:	10	Sefton:	25
Knowsley:	15	St Helens:	8
Liverpool:	36	Wirral:	26



How will we test the plan?



By looking how well the region is adapted and resilient to the impacts of climate change such as flooding and hotter summers.



By checking how well the Plan contributes to a carbon neutral Liverpool.



Making sure that peoples' physical and mental health and wellbeing is improved and that certain groups are not disadvantaged.



Asking whether it will help to deliver the right amount and types of homes in the right places.



Exploring how the economy can be strengthened and bring with it high quality jobs and improved education.



Looking at how well the plan helps to increase walking and cycling, reduce car use and congestion and improve accessibility.



Ensure the Plan helps to reduce inequalities between different community groups.



Looking at how the Plan protects wildlife and how well it facilitates a recovery in biodiversity across the City Region.



Looking at how the Plan can help to achieve clean air for the City Region and minimise exposure to poor air quality.



Asking whether the Plan will affect the quality of water resources across the City Region and the coastal areas.



Making sure the best quality soils are protected and land is used effectively.



Exploring how new forms of development can affect important landscapes and urban spaces.



Looking at how importantly the Plan treats cultural heritage so that the historic environment is preserved, enhanced and enjoyed.



Asking how well the Plan supports a circular economy where less waste is produced and it is treated as a resource.



Looking at the protection, usage and transport of minerals in the City Region and beyond.



Mersey Gateway,
Halton



Knowsley Hall,
Knowsley



Gormley Statues,
Sefton



St Helens Saints
Stadium, St Helens

All spatial data in this document is licenced under the Open Government Licence v3.0. © Environment Agency copyright and/or database right 2020. All rights reserved. Contains public sector information licensed under the Open Government Licence v3.0. © Natural England copyright. Contains Ordnance Survey data © Crown copyright and database right 2020. © Environment Agency copyright and/or database right. British Geological Survey ©. NERC National Soils Research Institute © Cranfield University. © Crown 2016 copyright Defra. Centre for Ecology and Hydrology © NERC.

© 2020 AECOM Limited. All Rights Reserved. This document has been prepared by AECOM Limited ("AECOM") for sole use of our client (the "Liverpool City Region Combined Authority") in accordance with generally accepted consultancy principles, the budget for fees and the terms of reference agreed between AECOM and the Client. Any information provided by third parties and referred to herein has not been checked or verified by AECOM, unless otherwise expressly stated in the document. No third party may rely upon this document without the prior and express written agreement of AECOM.

