

2021/22

ANNUAL REVIEW

LIVERPOOL CITY REGION COMBINED AUTHORITY

A FAIRER, STRONGER,
CLEANER, CONNECTED,
VIBRANT CITY REGION
WHERE NO-ONE
IS LEFT BEHIND.

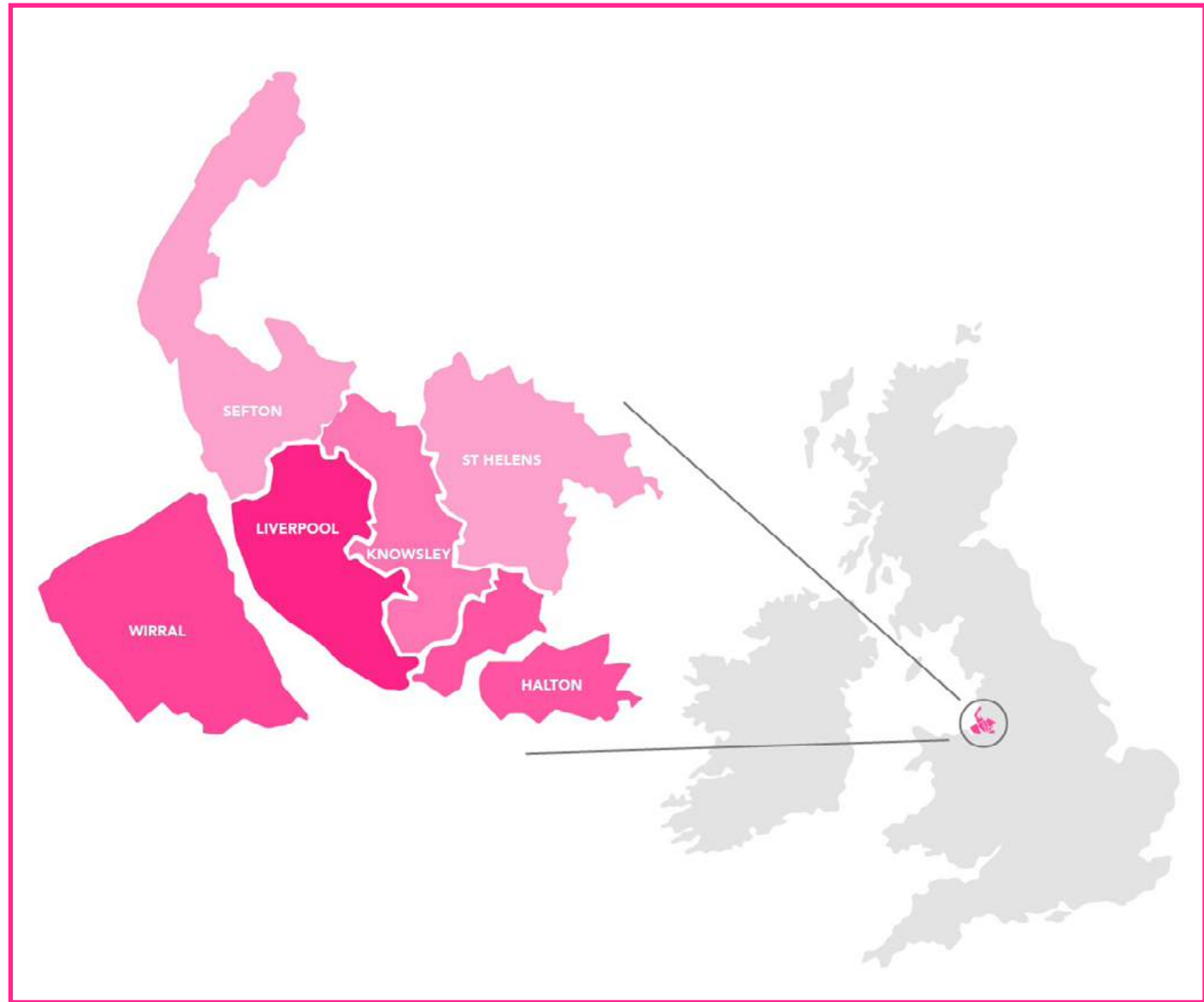


**LIVERPOOL
CITY REGION**
COMBINED AUTHORITY

METROMAYOR
LIVERPOOL CITY REGION

CONTENTS

- 03 Foreword
- 07 The Year in Numbers
- 11 Priority Areas
 - A Fairer City Region
 - A Stronger City Region
 - A Cleaner City Region
 - A Connected City Region
 - A Vibrant City Region
- 52 Portfolio Holders and Deputy Portfolio Holders



A MESSAGE FROM THE METRO MAYOR



While the past year has undeniably been one of the most significant periods in our region's long and storied history, I'm incredibly proud of what we have achieved.

Tasked with rebuilding our economy in the aftermath of an unprecedented global pandemic, the decisions we've taken over the last 12 months have put our region well on the road to recovery.

At every turn on that journey, our residents have been at the heart of the choices we've made. In such turbulent times, it's vital we create opportunities for them to reach their potential and lead healthy, happy, and fulfilled lives.

From the £150m COVID Recovery Fund I launched immediately after my re-election to jump start our region's revival, a unique Mayoral mission to Ireland, investments in award-winning film and TV productions, to the funding we've put into creating jobs, training and skills opportunities, the decisions we've taken have helped to transform people's lives now and opportunities in the future.

That work has already led to the creation of 10,000 jobs and 7,000 apprenticeships for local people. But I still want to do much, much more.

We've been working tirelessly to take forward my vision to build a London-style transport network that puts the public back at the heart of public transport, making it much cheaper, quicker and more reliable to get around the region.

Major steps have been taken towards delivering that goal, with local leaders choosing franchising as the region's preferred operating model for the future of our buses. We hope to make a final decision on that as quickly as possible. I am immensely proud of the fact that we were able to wrestle more than £710m away from government to invest in better transport infrastructure.

While transport - our trains, canals and docks - made us the gateway to the First Industrial Revolution, I want our strengths in wind, tidal and hydrogen to make us the leader of the Green Industrial Revolution. We've got the potential to establish ourselves as the UK's renewable energy coast and smash through our target to be net zero by 2040 - well before national targets.



Mersey Tidal Power is just one of the many exciting projects that feature in our Innovation Prospectus. I want to build on our existing industry strengths in science and research to put our region at the forefront of UK innovation. The prospectus outlines how £12bn investment in research and development could generate £41.7bn GVA in the local economy and create an additional 44,000 jobs.

I am ambitious and optimistic for the future of our region. However, I recognise that we cannot do everything alone.

Over the past year, we've hosted several ministerial visits to showcase our region on a national stage - and our door will always remain open to those

in government who want to work with us – whoever that government might be.

Only by working together can we achieve our mission to build a brighter, more prosperous future where no one is left behind. Thanks to the progress we've made over the last year, I believe that vision is firmly within our grasp.

Steve Rotheram
Metro Mayor of the Liverpool City Region

A handwritten signature in black ink that reads "Steve Rotheram .".

FOREWORD FROM COMBINED AUTHORITY LEADERS AND MAYOR

As leaders and Portfolio Holders of the Liverpool City Region Combined Authority, we know there is a lot to do to deliver even more for our residents, so we are pleased to present the progress being made to deliver our Corporate Plan. We are all very proud of the places we lead, the extraordinary efforts we have all made responding to such unprecedented times and how we are moving forward to shape the future for our residents.

We are seeing how devolution can really deliver and improve people's lives, and so we must continue to work at the regional level and in close partnership to do just that.

This Annual Review sets out what we can achieve by continuing to work together, and the difference it can make to the people who live here.

We want to continue to work with and listen to our communities and empower them to continue to play an important role in how we deliver for them.

Recovering from the pandemic, tackling inequality, delivering social value and dealing with the climate emergency are important to all of us. As a team, we will continue to work together to address these issues and deliver the vision for a fairer, stronger, cleaner city region, where no one is left behind.



Cllr Mike Wharton,
Leader of Halton Council



Cllr Graham Morgan,
Leader of Knowsley Council



Joanne Anderson,
Mayor of Liverpool



Cllr Ian Maher,
Leader of Sefton Council



Cllr David Baines,
Leader of St Helens Council



Cllr Janette Williamson,
Deputy Mayor and
Leader of Wirral Council

A MESSAGE FROM OUR CHIEF EXECUTIVE

In July last year, the Combined Authority agreed its three-year Corporate Plan for 2021-2024.

We set out with optimism that this would be the beginning of a period of recovery, building on the huge progress made before the pandemic and on the massive efforts of the Combined Authority, its six constituent local authorities and many partners to protect the economy and our communities from its worst impacts. However, the impact of the pandemic has continued to be felt during the last year and the cost-of-living pressures on many residents are prevalent. Our strong emphasis on partnership and collaboration is now more important than ever.

Against this backdrop we have, over the last year, made real progress on the priorities set out in the corporate plan and seen many of the policies and investments decided in the first years of our mayoral combined authority start to bear fruit and bring real benefits to the city region.

The achievements highlighted in this document are testament to all those colleagues and partners that have helped deliver our shared priorities.

This annual review cannot cover everything we have done, but it does offer a snapshot of progress across all the five key areas – to create a fairer, stronger, cleaner, connected and vibrant city region – where no-one is left behind.

We still have two years of this plan to run – and no doubt, we will continue to face challenges in an uncertain world.

But I am a great believer that keeping a longer-term focus whilst managing for today will help us achieve our aim of inclusive economic development and prosperity. And I know that together we will continue to strive to do the very best for this wonderful region.



Katherine Fairclough
Chief Executive of the Liverpool
City Region Combined Authority


Katherine Fairclough

A YEAR IN NUMBERS

1.6M 
Residents

6 Local Authorities

∞ Infinite possibilities

 4 BAFTA Awards for CA-backed TV dramas

150 world-leading science and technology businesses on LCR Connections

£44M In emergency Covid business support funding

£1M Metro smart ticket sales

2 year Visitor Economy Strategy

£2 Adult single bus fare

£2.24M High Growth Innovation Fund


2.5M  Miles on Liverpool e-scooter pilot

£2M Film Production Fund 

£10.5M LYVA Labs: £10.5m to turn great ideas into high-growth businesses

£8.1M to deliver Skills Bootcamps

20 zero emission hydrogen buses on order

1,154  Residents supported by Households in to Work

5% R&D to be 5% of economy by 2030 – double the national target

80 £1 million invested in 80 community environmental projects

69% Of people surveyed support 'Liveable Neighbourhoods'

50,000 Potential jobs by 2035 under Plan for Prosperity

 100 young people's voices for COP26

22,000 sq ft Film and TV studios

£12BN Innovation: £12bn of public sector and private investment opportunities

£10.5M City region investment in 350-seat Shakespeare North Theatre

30,000

Adult learners

£150K

Music Fund

212km 

£30m, 212km LCR
Connect ultra-fast
broadband network

45km²

Freeport area -
expected to attract
£800m investment,
14,000 direct and
indirect jobs

£710M

City Region Sustainable Transport
Settlement secured from central
government

£6M Town Centres
Fund

£15M
Grant to Bramley
Moore stadium
public realm works

£9.4M expansion of
the award-
winning
Be More


£12M

Eureka! Science +
Discovery visitor
attraction



Over 100 years
clean energy,
powering 1
million homes.

2,000

Local Growth Fund:
2,000 jobs been
created – 35%
higher than forecast in
2021/22. 9,811 in total

£2.20

MyTicket young
people’s all-day
bus fare frozen

1,000 Homes
retrofitted
to date

22

Socially trading
organisations
benefitting from
£1m Kindred funding

£150M

Covid Recovery
Fund

£45M

Brownfield Land
Fund allocated

£20K

Social value
required in all
contracts over
£20,000

600km

Building a 600km
safe cycling and
walking network

1%

For Culture

2 Boroughs
of Culture

2040

Net zero carbon
by 2040

£500M

Invested in new,
state-of-the-art
trains

22,000

Plans to train 22,000
Local Authority and
Combined Authority staff
in Race Equality

£32M

For Green Bus
Routes

IN FOCUS: RUNCORN STATION QUARTER

- HALTON



- Runcorn station CGI

RUNCORN STATION QUARTER, HALTON

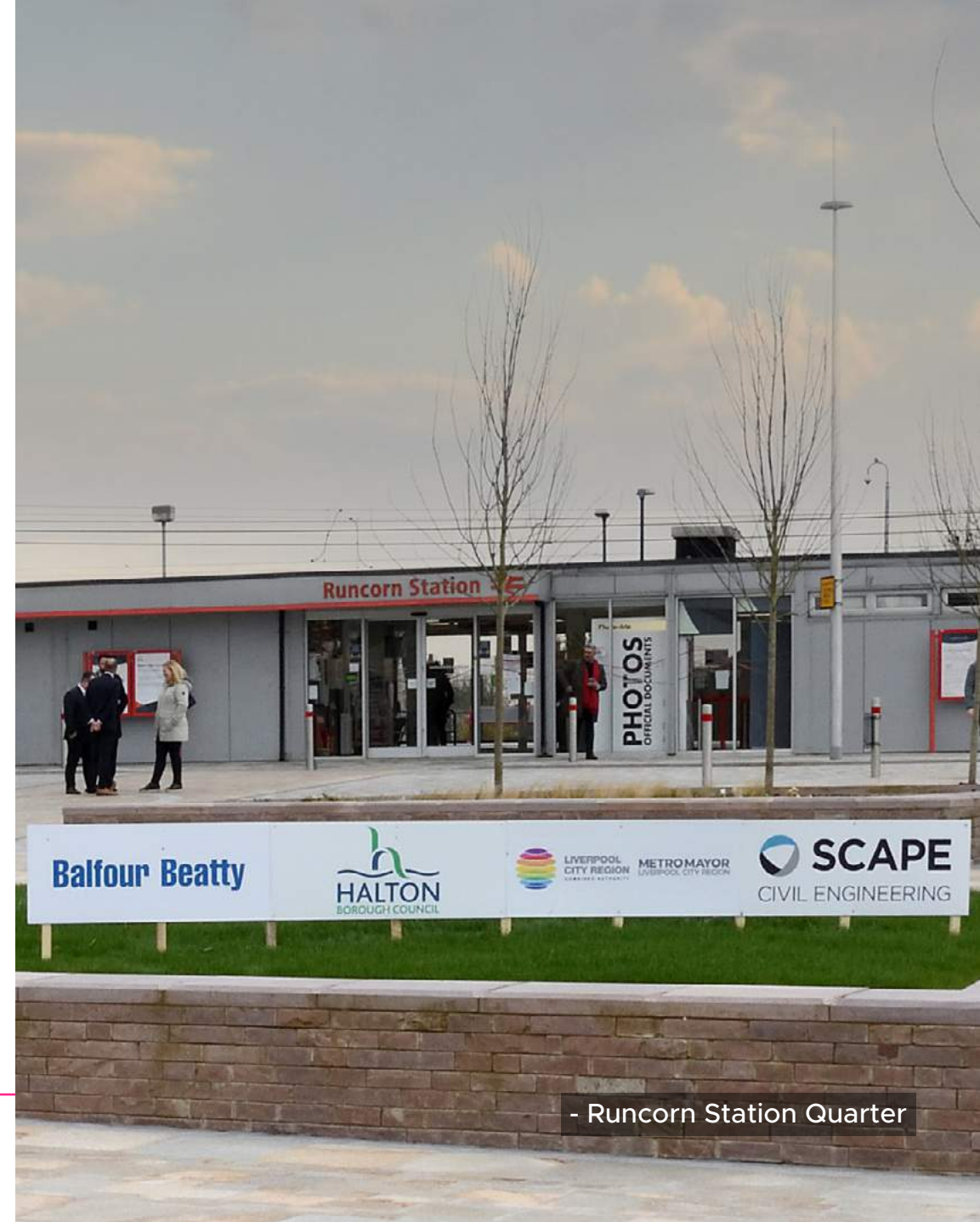
In March this year, work at Runcorn Station Quarter was completed, improving transport links, leisure and business opportunities in the area.

The scheme has created a new Piazza area outside Runcorn station, offering an attractive, high quality public space and enabling passengers to move easily between trains, buses and taxis. Improvements to footways and cycleways have also been created.

The project included the construction of a new five-arm roundabout creating better connections between the Silver Jubilee Bridge, Runcorn Town Centre and Runcorn Station, and enabling the removal of the highway structures known as the Trumpet Loop, which cut the station off from Runcorn Old Town.

Extensive new paintwork and maintenance to the Silver Jubilee Bridge, which is now open to cyclists, pedestrians and vehicles, was also part of the wider project, and supported by the Combined Authority.

Halton Council's exciting vision for Runcorn Station Quarter, supported with around £22m from the Combined Authority, has created an impressive gateway to Runcorn, Halton and the Liverpool City Region.





- Asylum seekers and refugees learn the quintessentially English art of crown green bowls

PORTFOLIO HOLDERS

Education and Skills
and Equality
and Diversity

Inclusive Economy
and The
Third Sector

We will be recognised as leaders in social innovation and one of the most inclusive economies in the world. We will have taken proactive action to tackle inequality, remove barriers and provide opportunities for all our residents.

Manifesto Pledge: Young Person's Guarantee

- Pride march in
Liverpool City Centre



A FAIRER CITY REGION:

A fundamental commitment to fairness is at the heart of the Combined Authority's work, a key guiding principle in everything it does to improve the lives of the city region's 1.6 million residents.

The Corporate Plan committed the authority to a number of pieces of substantive work between 2021-24 designed to underpin this commitment and support the Mayor's pledge of a Youth Guarantee. Significant progress has been made over the last twelve months.

Underpinning the city region's economic and innovation ambitions is the need to develop a highly skilled workforce tailored to meet future challenges and plug existing skills gaps.

Extensive work took place during the last 12 months to identify and deliver priority training. In December last year, a £9.4m expansion of the award-winning Be More Liverpool City Region skills hub was announced as a key part of the Mayor's commitment to a Youth Guarantee.

In March, the expanded Be More apprenticeship website went live with £4.5m in training grants for employers set to be distributed by the end of the year. The goal is to help 1,500 employers train 10,000 people with £2m allocated to fill immediate skills gaps such as leadership and management, hospitality, tourism and cross-border trade regulations. Be More will be further expanded later this year, starting in August.


Also in March, a new Skills Action Plan was launched to help employers meet a record increase in job vacancies since the onset of the COVID-19 pandemic, and in April the Combined Authority secured £8.1m to deliver Skills Bootcamps in a range of sectors raising the number of people completing a bootcamp into the thousands.



WATCH: "Every little bit I learn online has boosted my confidence and I know I can use it for my business." - Janet Rach

Meanwhile the devolved [Adult Education Budget \(AEB\)](#) supported 30,000 learners over the year across a network of 34 local colleges, community learning providers and independent training providers.

More than half of participants have been female, over a fifth being from Black, Asian and ethnic minority backgrounds, with a similar proportion of learners typically reporting a disability, learning difficulty or health issue.

 **WATCH:** [Asylum seekers and refugees learn the quintessentially English art of crown green bowls thanks to pioneering approach to education by Liverpool City Region.](#)

Devolution has allowed the Combined Authority and its partners to innovate in the courses it offers and to ensure learning is relevant to the local economy. [Liverpool City Region's pioneering Test and Learn](#) method of delivering new innovative adult training has been recognised by the Government for its success in enabling flexibility.

AEB offered evening and weekend courses to up-skill people on low wages for new job opportunities and delivered short programmes to NHS staff in areas such as Dementia Awareness and End of Life Care.

Working with the Local Enterprise Partnership, hospitality courses were offered to fill vacancies and training was delivered in customer service, health and social care, Digital Creative Industry, Creative Media and Digital Marketing, HGV and logistics, warehousing, construction including Telecoms and Civil Engineering groundworks and welding.

Throughout the year, the [Households Into Work](#) programme also continued to help unemployed residents aged 16 and over move into employment. Between October 2020 and May 2022, its Employment Advocates have supported 1,154 residents, working within communities in all six local authority areas. In June, Households Into Work clients from across the region took part in videos to share their experiences – you can watch them here.

“I hope that by sharing our stories, it will mean other people will access the same support and see the same benefits as I have.”

- **Kirsty**
Widnes

 [Play the video](#)

Following the [Race Equality Declaration of Intent](#) earlier in the year, the Combined Authority announced its biggest ever investment in tackling racial inequality in July 2021, committing £3.2m to establish a Race Equality Hub aiming to remove barriers in the labour market. Alongside this, it committed to provide race equality training to 22,000 Local Authority and Combined Authority staff.

The announcement came just a few months after the Combined Authority established its wider [Race Equality programme](#). This recognises that not only does race equality impact individuals from Black, Asian and ethnic minority backgrounds but it also has a wider, overwhelming negative social and economic impact: increasing diversity could be worth £300m to the city region's economy every year. The Combined Authority launched the Generations for Change project to tackle racial inequality faced by young people and also invested in the Nia Black Business Hub pilot, to identify and tackle barriers that negatively impact on the economic position of Black, Asian and ethnic minority communities.

In April this year, the Combined Authority published its [Equality Strategy](#). The strategy sets out how it will seek to ensure that no-one is discriminated against due to the nine equality 'characteristics' protected by law including race, religion, gender, disability and sexuality. In a landmark move, the strategy also seeks for the first time to ensure that people are not discriminated against because of their social class.

“It cannot be right that people’s life chances are mapped out at birth, their entire lives decided because of who they are, where they were born or the size of their family’s bank account.”

- Steve Rotheram

Mayor of the Liverpool City Region

Equality Strategy 2022

Liverpool City Region Combined Authority



A fairer, stronger, cleaner Liverpool City Region – where no one is left behind

Throughout the year, 22 socially trading organisations started to benefit from the first £1m in grants announced in June 2021 by [Kindred](#), which is supported by £5m in CA funding in partnership with Power to Change, which has contributed £1m, with the aim of boosting the region's social economy.

The Combined Authority's innovative Housing First programme has continued to go from strength to strength. One of three UK pilot areas for the internationally recognised model, in traditional homeless services, people are expected to demonstrate they are 'housing ready' before they can access housing. In Housing First, providing a home is the starting point rather than an end goal, reflecting its first principle: *Everyone has the right to a home.*



READ: [How Chris' life was changed by Housing First.](#)

- Picture: [Liverpool Echo](#)

- Equality Strategy published in April

Working with Mayor Joanne Anderson in her role as Portfolio Holder for Equality, Diversity and Inclusion, the Combined Authority has developed a new Equality Infrastructure to embed inclusive engagement and decision-making into all its activities. This builds on the excellent work of the Fairness and Social Justice Advisory Board and is introducing new equality panels to provide advice and challenge to the Combined Authority.

International Women's Day 2022 saw Mayors Joanne Anderson and Steve Rotheram back new commitments to achieving greater gender equality across the Liverpool City Region, backing the One Day Today report, which sets out ten key objectives, including more women in leadership, supporting more women-led projects and investment in industries proven to drive economic growth such as care, hospitality, and culture.

In June this year, the Mayor called on young people to shape the “big decisions that matter” by forming Liverpool City Region’s first Youth Combined Authority. Applications opened in June for young people aged 13 to 18 – up to 25 for those with special educational needs or a disability. It is set to launch this September with up to 20 members from across the region.

Finally, in May, businesses, community and voluntary groups, employees, freelancers and people looking for job opportunities attended the Mayor’s mental health summit, looking at ways to tackle the long-term effects of the pandemic and cost of living crisis and their impact on mental wellbeing.



Joanne Anderson, Mayor of Liverpool; Dr. Fiona Armstrong-Gibbs, lead author of the report and Programme Leader at Liverpool Business School, Liverpool John Moores University; Gemma McGowan of One Day; Erika Rushton, Creative Economist; Katherine Fairclough, Chief Executive, Liverpool City Region Combined Authority; and Steve Rotheram, Metro Mayor of the Liverpool City Region.

The image captures the interior of the Shakespeare North Playhouse, a circular theater with a wooden stage and tiered seating. The stage is a large, light-colored wooden platform. The seating is arranged in a semi-circle, with wooden benches and a central aisle. The walls are made of wood, and there are two levels of galleries. The lighting is warm and focused on the stage. The ceiling is dark with some blue lighting. The overall atmosphere is that of a well-maintained, historical theater.

IN FOCUS: SHAKESPEARE NORTH PLAYHOUSE

- KNOWSLEY

- Shakespeare North interior

SHAKESPEARE NORTH PLAYHOUSE, KNOWSLEY

July 2022 saw the opening of the Shakespeare North Playhouse. This iconic new theatre and education space celebrates Knowsley's links with Elizabethan drama and Shakespeare himself, and will attract visitors and students from all over the world.

At the heart of the Shakespeare North Playhouse is a reproduction 350-seat Jacobean theatre based on the Inigo Jones' Cockpit-at-Court, built in 1629, while other parts of the building include education facilities, studio theatre, exhibition area, café/bar and outdoor spaces.

It is estimated that the Shakespeare North Playhouse will attract more than 100,000 new visitors to the Liverpool City Region each year from across the UK and internationally and boost the city region economy by £13 million a year during construction and by £5.3 million each year following opening.

The Combined Authority supported Knowsley Council to create this extraordinary new facility, with £10.55 million towards its construction and a further £9.9 million investment in major upgrades to Prescot train, Prescot bus station and transport connections in the town centre.



- Crowd gathers for Shakespeare North Playhouse opening



- Shakespeare North CGI



- Lab work at Liverpool Science Park

PORTFOLIO HOLDERS

Inclusive Economy
and The
Third Sector

Business Support

We will be recognised on the international stage as a hub of good business and innovation. We will have attracted investment to continue to develop our unique specialisms and be known for our expertise in science and innovation. There will be significantly more businesses providing good quality jobs for our residents.

Manifesto Pledge: Covid Recovery Fund



- CGI of Bramley-Moore Dock Stadium

A STRONGER CITY REGION:

The last year has seen the Liverpool City Region emerge from the Covid-19 pandemic. Having already distributed over **£44m in emergency funding** to more than 4,000 businesses, the Mayor, the Combined Authority, Growth Platform and local authority partners continued to support the pandemic-hit economy, including through the £8.1m Trading On Scheme for small and medium-sized businesses and a further £1.9m for small and micro businesses affected by additional restrictions, in response to the Omicron variant.

These interventions ensured the city region economy was well placed to rebuild from the pandemic and in Spring 2021 the Mayor announced a **£150m Covid Recovery Fund** to kickstart the city region's economy as the recovery gathered pace. The fund underpins a wide range of investments to support the economy to recover.

In April 2021, the Combined Authority-backed **Good Business Festival** staged its first live in-person event since the first lockdown as part of the Events Research Programme.

Weeks later the city region's vibrant hospitality sector opened up.

The Combined Authority continued to strategically invest in large-scale projects to drive the economy while delivering maximum social value.

September saw the Combined Authority commit to support Liverpool City Region's biggest regeneration project in more than a decade. A grant of up to £15m will be made towards the **Bramley-Moore Dock stadium project**, ensuring public realm works are delivered and the training and employment of local people. Overall, the project will create up to 15,000 jobs including new roles at the completed stadium and employment linked to a projected increase in visitors to the city region. It will also regenerate large parts of north Liverpool and south Sefton including the area around Goodison Park and will deliver an additional £237m of social value.

The Combined Authority's commitment to social value was further embedded in all Liverpool City Region Combined Authority activities – including the awarding of contracts and funding – with the adoption of its new [Social Value Framework](#). Under the framework, delivering extra benefits to the local community is now a much bigger part of awarding Combined Authority contracts, which could include the training and employment of local people, the use of local suppliers or the inclusion of apprenticeships in its contracts. Social value is now a core part of decision-making for all contracts above £20,000.

In January, the new [Plan for Prosperity](#) was published, delivering a unique vision of devolution – underpinned by more powers, more funding and partnership with government. The plan presented a roadmap for economic growth up to 2035 – outlining the potential creation of more than 50,000 new jobs.

Innovation, skills, high-tech and low-carbon industries, the [Mersey Tidal Power](#) project and the [Freeport](#) are highlighted in an overarching ambition to diversify the city region's economy and boost productivity. The plan also sets out firm commitments to improve quality of life for Liverpool City Region's 1.6m residents by tackling generational inequalities, cutting carbon emissions and promoting better health and wellbeing.



- Plan for Prosperity

Central to the Plan for Prosperity is innovation and Liverpool City Region's ambition for Research and Development (R&D) to make up 5% of the economy by 2030 – nearly double the UK target.

The vision, centred on three distinctive, world-class specialisms in infection prevention and control, AI solutions, materials chemistry plus emerging net-zero technologies, was detailed in the city region's first [Innovation Prospectus](#), which received a parliamentary launch in Westminster in April.

The evidence-led Prospectus presents a plan to supercharge Liverpool City Region's innovation powerhouse credentials and showcases more than £12bn of public sector and private investment opportunities including Mersey Tidal, Hynet and the Freeport. It also highlights the city region's investment track record, world-leading assets, well-established innovation infrastructure and ground-breaking collaborations between industry and the city region's Universities and research institutions including Sci-Tech Daresbury.

Achieving the 5% R&D target could deliver an estimated 44,000 new jobs, a 10% increase in productivity and a gross benefit of £41.7bn GVA.



- *Innovation Prospectus*



- iiCON director and LCR Innovation Board member
Professor Janet Hemingway

- The Port of Busan – picture from the Korea Tourism Organisation



Of course, actions speak louder than words and in June the Combined Authority committed a further £3.2m to [LYVA Labs](#), formerly LCR Ventures, which was set up last year as the city region’s dedicated innovation commercialisation vehicle. More than £10m has now been assigned to the initiative to help innovators across Liverpool City Region turn great ideas into high-growth businesses and good quality jobs for local people.

LYVA Labs recently announced its first funding of £175,000 for Frequasense Ltd to develop technology that rapidly detects sepsis – an infection that affects 245,000 people and is responsible for at least 48,000 deaths in the UK every year.

In May, the Combined Authority also launched the £2.24m [High Growth Innovation Fund](#) to help small businesses innovate, which itself built on two pilot rounds of the [Future Innovation Fund](#) which saw 35 local companies receive support worth £2.1m.



WATCH: [Future Innovation Fund backed projects](#)

Innovation featured heavily as Liverpool City Region participated in a government-backed trade mission to South Korea. As part of the [UK-Republic of Korea Innovation Twins Programme](#), Combined Authority Deputy Chief Executive Richard McGuckin visited the country’s largest port, Busan, in addition to the world’s biggest tidal power project near Seoul. A Korean version of the Innovation Prospectus is currently in production and a reciprocal mission is being planned.

In March, the Mayor jointly led an historic North West mission to boost trade and cultural links with [Ireland](#).

At the end of the three-day visit, Belfast, Dublin, the Liverpool City Region and Greater Manchester agreed to join forces to develop practical approaches to accelerate the delivery of net-zero. The agreement included commitments to share best practice, knowledge and experience, to facilitate R&D, investment and business collaborations, and to co-ordinate joint participation at events.

Chief Executive Katherine Fairclough led Combined Authority missions to MIPIM – the world’s leading property fair – and to the UK Real Estate Investment and Infrastructure Forum, to showcase the Liverpool City Region’s rich opportunities available to domestic and overseas investors.

Work is also underway to increase links with Germany.



In the Spring, the outline business case for the Liverpool City Region Freeport received Government approval and the full business case is currently being assessed.

Liverpool City Region Freeport will be a designated area covering 45km², in which a range of economic incentives will be available, covering customs, business rates, planning, regeneration, innovation and trade and investment support.

The Freeport is expected to attract £800m investment, 14,000 direct and indirect jobs created and add £850m to the local economy.

By late Spring, we were able to reveal that during the last financial year the number of jobs and training opportunities created by projects funded through the Local Growth Fund had outstripped forecasts.

Over the financial year 2021/22, more than 2,000 jobs had been created – 35% higher than forecast – and 526 apprenticeships plus 4,011 new learners had been supported, against a target of 2,889. The Combined Authority’s activities were on course to create 18,000 jobs through the Local Growth Fund alone.

Local Growth Fund projects will run until 2024/25 and have already delivered 9,811 jobs and over £187m of private sector investment, in addition to £108m of further public sector investment.

Projects backed by the Combined Authority include the redevelopment of [Kirkby Town Centre](#), Liverpool's City Centre Connectivity scheme and the construction of a new train station at Maghull North – the first new station to be built on the Merseyrail network in a generation.

Finally, the full Good Business Festival took place from March 22-24 this year and brought together some of the smartest minds from around the world to think big, galvanise ambitions and focus on ethical business – while highlighting work taking place to make the city region the fairest, most inclusive region possible. Guest speakers included the Dragons Den's Steven Bartlett.

In late May, Knowsley Borough Council hosted hundreds of young people at the Good Business Festival's Youth Summit, headlined by TV's Chris Packham and with an emphasis on climate and sustainability.

The event also highlighted ongoing development of the [Fair Employment Charter](#). Panels have been convening over the last few weeks to review applications from the first group of organisations to sign-up to the Charter.



- Kirkby Market



- Kirkby Town Centre

IN FOCUS: PADDINGTON VILLAGE

- LIVERPOOL

- The Spine, Paddington Village

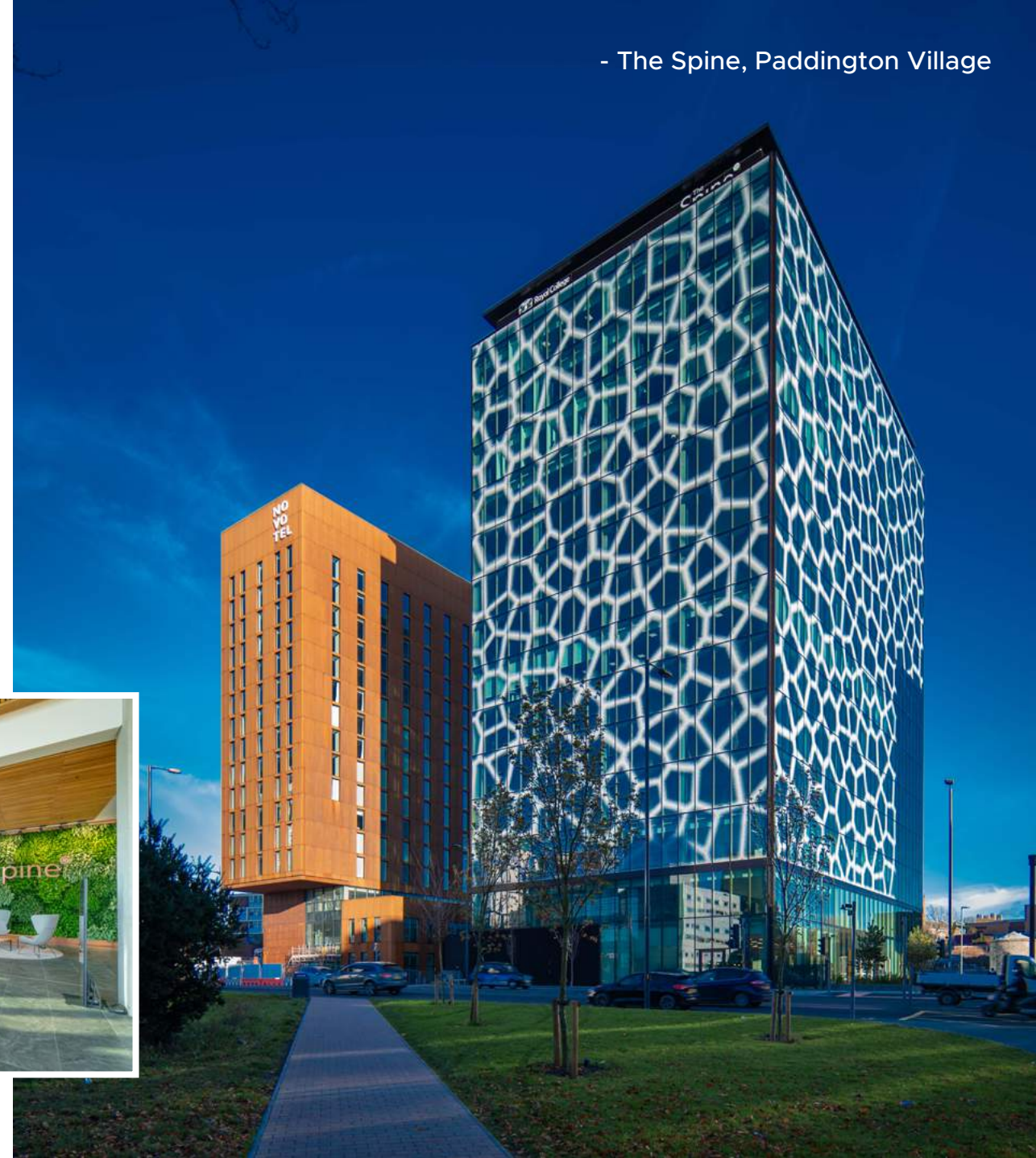
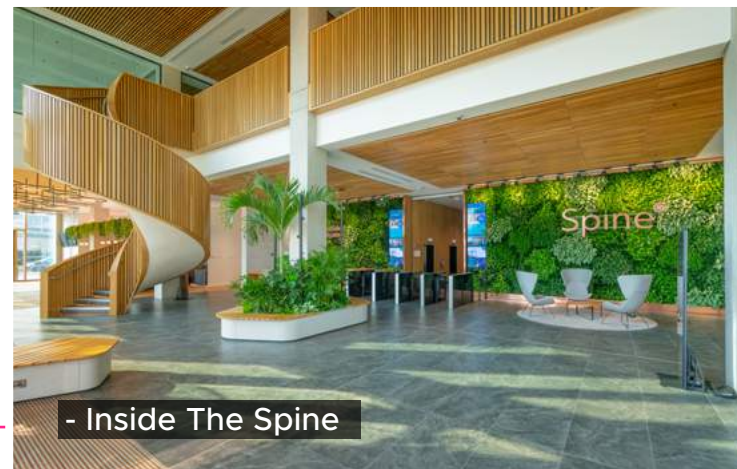


PADDINGTON VILLAGE, LIVERPOOL

Back in 2017, the first year of the Mayoral Combined Authority, a £12 million grant for infrastructure work to unlock development on Liverpool City Council's £1bn Paddington Village scheme was approved.

The grant would pay for enabling works including demolition and bringing services to the central 8.4 acres of the 30-acre Paddington Village, which is the flagship regeneration scheme in Knowledge Quarter Liverpool (KQ Liverpool). Ultimately the development aims to create 870 new jobs, and boost the local economy by £58m per year.

Fast forward to 2022 and No.2 Paddington Village is now The Spine, a £35 million beacon for the rapidly expanding Knowledge Quarter and the first Grade-A office building in the Liverpool City Region for more than a decade. One of the healthiest office buildings in the world, it now plays host to the Royal College of Physicians, the ground-breaking Pandemic Institute and a host of innovative businesses and organisations – including the Combined Authority's Lyva Labs innovation investment vehicle, launched in 2022.



CLEANER



- Mayor Steve Rotheram with local children at wildflower meadow

PORTFOLIO HOLDERS

Climate Emergency
and Renewable
Energy

Transport and
Air Quality

We will be a net-zero carbon city region, recognised as a pioneer in sustainable approaches to living, travel and doing business. With a relentless focus on addressing the climate emergency, we will place ourselves at the forefront of the Green Industrial Revolution. We will become a UK leader in clean energy production, generating power from tidal, offshore wind and hydrogen

Manifesto Pledge: Green Industrial Revolution



- Princes Park cycling group

A CLEANER CITY REGION:

The last year has seen an unprecedented focus on environmental issues, with a recognition that for the worst effects of global warming to be averted, there must be collective action to reduce carbon emissions to net zero.

The Liverpool City Region has been leading the way – it was the first Mayoral Combined Authority to declare a Climate Emergency and set a target to reach net zero carbon by 2040, a decade ahead of national targets.

In November last year the eyes of the world were on Glasgow for the COP26 climate conference and Mayor Steve Rotheram and Climate Emergency and Renewable Energy Portfolio Holder Cllr David Baines led the North West presence at the vital conference. As part of the build-up, a powerful video – 100 Voices – showcased the hopes and fears for the environment of the region’s children and young people.

Just a couple of months after COP26, the Combined Authority published The Liverpool City Region Pathway to Net Zero document, which set out how a net-zero carbon city region will look,

the massive work already underway and the rapid changes needed to achieve the target.

The document revealed how energy use must be halved in less than 20 years for the Liverpool City Region (LCR) to reach its target to be net-zero carbon by 2040 or sooner, and the need to switch from fossil fuels to renewable energy.

We’re already making progress across a wide range of areas, and the city region as a whole is benefitting from the determined efforts of its local authorities, which are all making great strides forward in developing net zero action plans and delivering projects within their own areas.

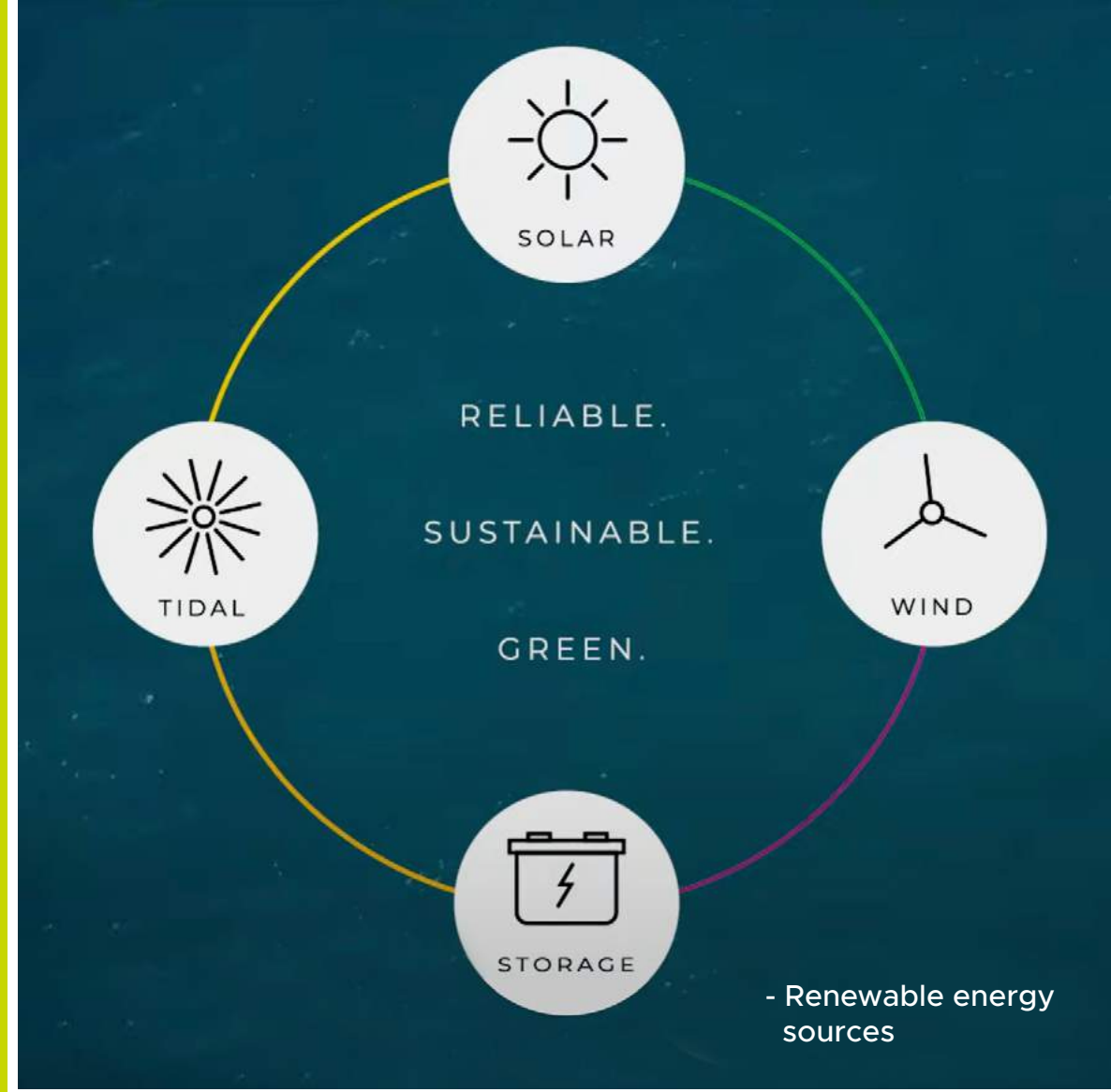
The city region’s Innovation Prospectus, published in April this year, identifies net zero technologies as one of the pillars on which to build the city region’s post-pandemic economy. The challenges of reaching net zero are also an economic opportunity.

The region is already leading the way in the Green Industrial Revolution and building on existing strengths in the low-carbon sector can drive economic recovery while doubling the number of green jobs to more than 50,000.

The city region can be the UK's renewable energy coast, building on its existing strengths and natural assets. Offshore wind in Liverpool Bay has already helped to make the UK the largest producer of wind power in Europe, and production is set to triple by 2032.

Work is continuing on the potentially transformational Mersey Tidal Power Project, which is recruiting an expert technical advisor and designer to develop the next stage designs for the scheme. This low-carbon electricity generation project could harness the power of the River Mersey and Liverpool Bay to produce enough energy to power a million homes while creating thousands of jobs in its construction and operation. When built, it has the potential to create clean, green, predictable power for more than a hundred years.

 **WATCH:** Mersey Tidal Power Project



Hydrogen looks set to play an important part in the energy mix in the years to come. HyNet will produce hydrogen to replace fossil fuels in transport, industry and homes while also capturing and storing carbon dioxide produced by energy-intensive industry. In October 2021 it was confirmed as one of just two carbon capture, usage and storage schemes nationally to be selected for further development by government.

Decarbonising the energy supply is crucial, but it is also vital to ensure that energy does not leak from inefficient housing. 62% of the City Region's 700,000 properties are level D or lower on the EPC rating. Over the last year the Combined Authority has secured nearly £60 million from a range of government schemes to retrofit energy efficient measures to the properties of almost 5,500 low-income households. Almost 1000 homes have been retrofitted to date.

Transport is responsible for around 30% of emissions and that figure must be reduced to reach net zero and clean our air.

Enabling more people to move from cars to public transport and active travel is vital.



- New train at the platform

In August last year, the Combined Authority started taking delivery of its £500 million fleet of state-of-the-art, publicly owned, electric trains and commence their testing on the network.

July last year saw the successful completion of trials that proved the effectiveness of pioneering battery technology that will enable the extension of the Merseyrail network, without using polluting diesel engines.

In August 2021, the Combined Authority started the process to commission the first 20 of a fleet of hydrogen-powered buses, with associated refuelling stations, to augment the city region's bus fleet, 70% of which is already lower emission. Work is continuing to link all modes of public transport and active travel, along with the iconic Mersey Ferries, to create a London-style integrated transport system, to get people out of their cars and on to sustainable public transport.

Over the next few years, with £710m available from the City Region Sustainable Transport Settlement there is the opportunity to deliver this low carbon transport vision. And as petrol and diesel cars are phased out, Ford's Halewood plant plans to produce around 250,000 batteries to power electric cars, every year.

The cleanest way to get around is under our own steam and the Combined Authority is championing active travel, with work progressing on a 600km network of walking and cycling paths, and an associated campaign to persuade people to ditch the car for shorter journeys.

In May this year, at the city region's first Active Travel Summit, Mayor Steve Rotheram announced an additional £12 million to create more safe,

segregated bike paths and footways and improve junctions across all six boroughs of the Liverpool City Region. Reducing traffic and decarbonising transport will also have a key role to play in improving air quality.

The Combined Authority is partnering with local authorities and industry to tackle global problems. Projects such as Glass Futures in St Helens, which will work on decarbonising the glass industry worldwide, and with Unilever on the National Packaging Innovation Centre, Wirral, which will tackle the use of single-use plastics in the £1 trillion global packaging industry, are key parts of driving a green industrial revolution across the city region. Building work on Glass Futures started in February this year with the steelwork completed in June.



- Glass Futures, St Helens

At a community level, last year the Combined Authority invested £500,000 in 58 local projects in all local authority areas of the city region through the first round of the Community Environment Fund. The fund empowers local communities to improve their local environment. The Fund was so successful it is running again this year with a further 30 projects receiving support.

The work to reach net zero may appear daunting but, by working together, the city region has had successes in recent years – carbon dioxide emissions dropped by 40% between 2005 and 2018, largely through the impact of the offshore wind sector in decarbonising the electricity grid. It can, and must be done, but success will be achieved together, through a collective effort across the city region.



- Children's beekeeping project

- Barry the bee whisperer

IN FOCUS: BOOTLE TOWN CENTRE AND THE STRAND

- SEFTON



- Bootle Town Centre and The Strand CGI

BOOTLE TOWN CENTRE AND THE STRAND, SEFTON

Town Centres and shopping habits are changing fast – and Bootle is tackling that change with a significant and ambitious project to enable the regeneration of one of the most deprived areas in the UK and one of the towns hardest hit by the pandemic.

Centred on the Bootle Strand Shopping Centre, the plan aims to completely transform the town's offer for local people, businesses and visitors. It will add leisure, food and drink as well as education and health facilities, providing people with everything they need to live and work in easy reach on the high street and supporting the growth of the local economy.

Led by Sefton Council, with the support of the Combined Authority, the project heralds an exciting future for Bootle and the wider area, which will position the town well to take full advantage of the recent success of the Combined Authority in gaining Freeport Status for the Port of Liverpool, which is located in Bootle.

The Combined Authority has already supported the project with £500k from its Town Centres Fund and subsequently with £1.8 million to support the early stages of the Strand Repurposing Programme to regenerate Bootle town centre.

This funding has enabled the disused space adjacent to the Strand to be opened up to create a dynamic, multi-purpose venue that will sit alongside the Leeds-Liverpool Canal. This will include a food and drink offer, new events spaces and an urban garden and represents the early first steps to a much bigger transformation in the town.



- Bootle Town Centre vision and concept design

Sefton has huge ambitions for the physical, economic and social regeneration of the area and the Combined Authority's support demonstrates just how powerful these investments can be for local communities.

It has played a key role in enabling the increasing enthusiasm and engagement of local communities, including the involvement of local organisations Y-kids and the Big Onion in bringing communities together around the project.

CONNECTED



- Mayor Steve Rotheram with new train

PORTFOLIO HOLDERS

Digital Connectivity
and Inclusion

Transport and
Air Quality

We will be a net-zero carbon city region, recognised as a pioneer in sustainable approaches to living, travel and doing business. With a relentless focus on addressing the climate emergency, we will place ourselves at the forefront of the Green Industrial Revolution. We will become a UK leader in clean energy production, generating power from tidal, offshore wind and hydrogen.

Manifesto Pledges: London-Style Transport
System, Digitally Connected City Region



- CGI images of Headbolt Lane Station

A CONNECTED CITY REGION:

We will connect all our communities to opportunity, physically and digitally. Our public transport system will be reformed, fully integrated, and provide a genuine alternative to the car. We will be the most digitally connected city region in the UK.

Significant progress has been made towards the goal of a public transport network that's accessible, reliable, affordable and that offers a genuine alternative to the car. Last July, the Liverpool City Region trialled battery-powered trains for the first time on its rail network. The technology was tested on the city region's new £500m train fleet and its success paves the way for expansion of the Merseyrail network. By removing the need for an electric 'third' rail, batteries brought the Mayor's vision of a Merseyrail for All a step closer.

The first station to benefit from battery-powered trains will be Headbolt Lane, Kirkby. In March construction work began on the new £80m station that includes a bus interchange and Active Travel facilities. The station will have step-free access throughout, cycle storage, and waiting rooms and

will become a gateway to Knowsley Business Park - one of Europe's largest employment sites.

From building a new station to reopening an old one, Liverpool Baltic was chosen by the public as the name for Liverpool's long-disused St James station. The station development will re-connect one of the city's most vibrant districts to the Merseyrail network. Last summer's pioneering battery trial was followed weeks later by the official handover of the first train in the city region's new, state-of-the-art fleet from manufacturer Stadler. In doing so, Liverpool City Region became the first to own its train fleet.

This theme continued when the Combined Authority formally adopted franchising as the city region's preferred model for running the bus network and services. It was a landmark move that brought public control of buses a major step closer. Work is taking place to complete the franchise business case and an independent assessment, before a public consultation is launched in the New Year.

If ratified, the Combined Authority would be able to specify bus routes, set fares and control fare policy.

The Combined Authority is already working to make bus travel more affordable – through the introduction of a **£2 adult single fare**, paid for by the city region’s Bus Services Improvement Fund allocation from central government. The new fare means passengers could save up to 13% on the cost of single journeys. **MyTicket**, which gives young people all day unlimited bus travel, was also frozen at £2.20 for the next three years.

At the start of 2022, upgrades to the city region’s busiest bus corridors were announced - to create ‘**Green Bus Routes**’. The £32m programme will see passengers on the 10A route become the first to enjoy faster, smoother, safer and more reliable journeys. Work on the first phase of improvements at Prescot Bus station are due for completion this summer. Passengers on the 10A will also be the first to step on board the region’s 20 publicly owned, new generation **hydrogen buses**. The zero emission buses will improve air quality along the busy route and include a range of special features including wireless phone charging and internet access. They will also be more accessible – with increased capacity for wheelchair users, and audio and visual announcements.

A manufacturer was confirmed in summer 2021 with the first vehicles set to arrive in the city region by the end of 2022.



In November, the Combined Authority [secured £710m in transport funding](#) from central government – more per head of population than comparable city regions. The City Region Sustainable Transport Fund (CRSTS) will fund work to encourage people to shift from the car to public transport and active travel. It will also improve safety on the network, make it easier and cheaper for people to travel and cut carbon emissions. £232m will be spent on the region’s highways, with a focus on building the 600km cycling and walking network and improving the bus network.

On Mersey Ferries, [Seacombe Ferry Terminal](#), Wirral, received a multi-million-pound upgrade including the replacement of 130-year-old linkspan bridges.

Smart ticketing is a cornerstone of making public transport convenient and affordable, and the city region’s online ticket portal is gaining popularity. Last autumn, sales via the [Metro smart ticket portal](#) hit the £1m mark, despite the challenges of the pandemic.

Digital improvements were also made to the Mersey Tunnels with video technology introduced in both the Queensway and Kingsway tunnels. The move was linked to the launch of the new [T-FLOW](#) pre-payment system in November that is replacing the Fast Tag account system.



- Work to replace the Linkspan bridges at Seacombe Ferry Terminal



**WATCH: LFC parade
time-lapse from
Mann Island HQ**



- Liverpool FC parade

Hi-tech advances are not confined to traditional modes of transport – with Liverpool’s [e-scooter trial recently celebrating its first anniversary](#). Delivered in partnership with Liverpool City Council and operator Voi, the trial has been one of the most successful in Europe with more than 1.5 million rides and more than 2.5 million miles clocked up so far.

Carbon emissions have fallen across all aspects of society except transport – due to a reliance on cars. The push for net-zero by 2040 saw a concerted campaign, with the slogan ‘[The Best Vehicle for Short Journeys is – You](#)’, to persuade motorists to get out of their cars and walk and cycle more – particularly on short journeys.

In May, the city region staged its first [LCR Active Travel summit](#), attended by advocates, community activists and policymakers. LCR Active Travel Commissioner, Simon O’Brien, and Wirral Olympic cycling gold medallist, Chris Boardman – now head of Active Travel England - supported the event.

The summit was bolstered by the announcement of an additional £12m to fund cycling infrastructure across all six boroughs – in addition to £30m already invested.

The funding will help deliver [School Streets](#) schemes – reducing traffic congestion and pollution at school gates during pick up and drop off times – as well as low traffic ‘Liveable Neighbourhoods’, which recent research showed were supported by 69% of people in the city region.

With CRSTS money, a total of more than a quarter of a billion pounds will be supporting Active Travel networks across the Liverpool City Region.

Combined Authority transport and support teams and partners played a crucial role in keeping transport running throughout the pandemic, supporting essential workers and communities across the region. This summer, these teams came together again to ensure tens of thousands of people moved safely around the region during this summer’s Liverpool FC Parade.

Run in partnership with Merseyside Police and the Police and Crime Commissioner, the [Safer Streets](#) Liverpool campaign was launched to improve women’s safety.

New and upgraded CCTV was installed on the public transport network and drivers received active bystander training. In addition, a new text message service was launched enabling women and girls to report sexual violence on the bus network. The discreet service will enable Merseyside Police and TravelSafe to immediately act on information to tackle offenders and help keep people safe.

A huge step forward in digital connectivity was also taken when, in October, the Mayor and Portfolio Holder officially [launched LCR Connect](#).

This £30m joint venture – 50% owned by the Combined Authority - will deliver ultrafast digital infrastructure across the whole Liverpool City Region, generating an initial £105m for the local economy, leading to an eventual £1 billion boost.

The 212km network will provide gigabit-capable speeds and will help position the Liverpool City Region at the forefront of growing innovation sectors, including health and life sciences, Artificial Intelligence, digital and creative - and net zero.

Work is ongoing to install the network in all six city region local authorities and in June the [first major customer was announced](#), with Sci-Tech Daresbury becoming the first location in the Liverpool City Region to install [LCR Connect full fibre](#). The move doubled its capacity and future-proofed connectivity for more than 150 world-leading science and technology businesses based on the campus.



[WATCH: LCR Connect brings next generation connectivity to businesses across the region:](#)

IN FOCUS: GLASS FUTURES

- ST HELENS



- CGI of Glass Futures

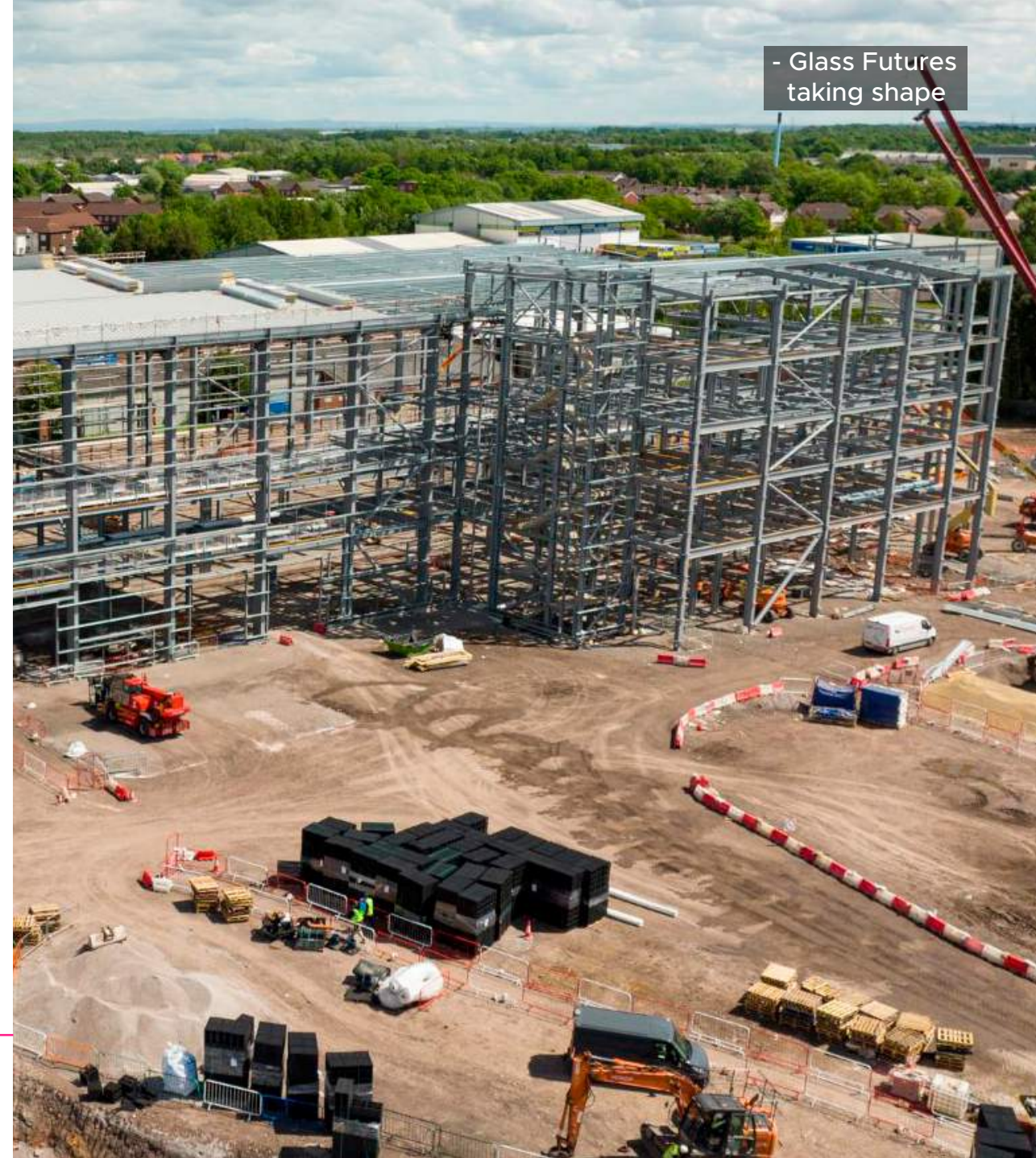
GLASS FUTURES, ST HELENS

Work is continuing at-a-pace on the Glass Futures Global Centre of Excellence, with the steelwork structure completed in June 2022.

Based in the traditional centre of the UK glass making industry in St Helens, Glass Futures is a unique, industry-backed Research and Technology Organisation, leading collaboration across some of the largest companies in the global glass industry and its supply chain, together with academia and local and central government.

The £54 million project will create the world's first openly accessible test and trial furnace facility, which will be used to deliver industry and government-backed R&D projects focused on decarbonising glass production, and also providing a platform for industry to test and trial their own commercial ideas on a state-of-the-art line, both collaboratively and individually.

The project has been awarded a £9 million grant from the Liverpool City Region Combined Authority and secured a £15 million UKRI funding for a globally unique, experimental furnace and state of the art infrastructure, capable of melting 30 tonnes of glass per day in a safe experimental space. Glass sector companies will also contribute a further £20 million in resource, time and equipment to support the project.



- Glass Futures taking shape



- L-R: Sarah Lovell, Mike Wharton, Maggie O'Carroll and Ngunan Adamu

PORTFOLIO HOLDERS

Housing and Spatial
Framework

Culture, Tourism and
The Visitor Economy

We will be a great place to live, visit and work. We will continue to invest in our international image brand positioning and developing a world-leading cultural offer. Our city and town centres will be creatively reimaged alongside the communities who use them, providing opportunities for business and supporting the wellbeing of all communities.



- Ngunan Adamu hosting the 2021 Culture & Creativity Awards ceremony

A VIBRANT CITY REGION:

Liverpool City Region's vibrant culture, creative, visitor and hospitality sectors were offered far-reaching support to survive the pandemic and prosper once restrictions were lifted. The benefits of those interventions became apparent last year – along with the dividends of high-profile, longer-term investments.

In March 2021, a five-year [Cultural Compact Action Plan](#) to rebuild the sector was published - building on a commitment to [spend 1% of the Combined Authority's annual £30 million budget](#) on culture.

The action plan included the successful Borough of Culture programme awarded each year to one of the city region's six local authorities to celebrate and strengthen their existing cultural offer and to develop new initiatives underpinning future development and legacy. Halton assumed the Borough of Culture mantle last year with a programme ranging from MakeFest and Celebrate Halton Music to large-scale light installations and pop-up activity at Culture HQ. The annual [Culture and Creativity Awards](#), held at Cronton Playhouse in March, honoured work that took place throughout 2021.

[Knowsley took over Borough of Culture](#) this year with a packed programme including art, theatre, comedy, dance, food, sport and a colourful trail of Owls and Pussy Cats celebrating the area's links to the world-famous poem.

[Shakespeare North Playhouse](#) opened in Prescot this month marking a cultural highpoint for Knowsley and the whole city region. Celebrating the borough's links with Shakespeare and attracting global media attention, the playhouse features a 350-seat theatre, a studio theatre, and an outdoor performance garden. The Combined Authority invested £10.55m in the project plus nearly [£10m upgrading the town's transport connections](#). Shakespeare North is expected to generate hundreds of jobs and boost the city region's economy by £5.3 million a year.

Also in Knowsley, the Combined Authority invested £12.8m to support Knowsley Council's ambitious redevelopment of [Kirkby Town Centre](#). The retail and leisure development has transformed the town centre with a new 45,000 sq ft Morrisons superstore, a 20,000 sq ft Home Bargains and Taco Bell and KFC drive-thru restaurants. A multi-screen cinema is being developed with Combined Authority support and in June £2.2m was approved to create a sustainable travel hub including a multi-storey car park, electric vehicle charging and cycle storage.

In July 2019 [the Mayor's £6m Town Centre Fund was approved](#) - awarding up to £1m to each of Liverpool City Region's six local authorities to revitalise town centres. Ten centres were identified for investment: Bootle, Earlestown, Halton Lea, Huyton, Liscard, Liverpool's County Road, New Ferry, Prescott, Southport and St Helens.

Increased flexibility for local authorities to use the £6m fund was approved over the last 12 months to support local high street recovery. Numerous Town Centre Fund projects have now been completed - revitalising local centres, enriching lives and creating opportunities. In addition, the authority invested £1.8m into redeveloping [Bootle Strand shopping centre](#) and land next to the Leeds Liverpool Canal - to stimulate the local economy, transform the look and feel of the town and improve quality of life. Last August Bootle Canalside hosted its first pop-up event - including food stalls, music and artists - and more events followed.



- Bootle Town Centre CGI

Liverpool City Region received £45m from the Government's Brownfield Land Fund to prepare previously developed 'brownfield' land suitable for thousands of homes for building works. In November 2021, it was announced that the fund would support eight private sector and six local authority home-building schemes, with £11m invested to create almost 900 homes. The money was all allocated by March this year, [including an additional £14.8m top-up fund announced in March.](#)

In January the Combined Authority approved a two-year [Visitor Economy Recovery Strategy](#) to revive a vital sector that supported more than 55,000 jobs and generated £5bn a year before the pandemic. Several key large-scale projects were identified to help draw leisure and business visitors back to the Liverpool City Region and help rebuild the conference and events sector.



- The Dream, St Helens

These include the Shakespeare North Playhouse and the [Eureka! Science + Discovery](#) visitor attraction at Seacombe Ferry Terminal, which is due to open this Autumn with the help of £6.6m Combined Authority investment. This £12m attraction for young people up to 14 years old will include exhibits and activities designed to boost children's development.

Last summer, as lockdown restrictions were eased, a new £1.5m fund was launched to lure UK tourists back to the Liverpool City Region. The package targeted domestic visitors but also included plans to increase international visitor numbers and improve the City Region's tourism websites. A further plan, is being developed to help rebuild the city region's conference and events sector.

Having successfully distributed [more than £44m in emergency funding to more than 4,000 businesses](#) across the city region during the pandemic, the Liverpool City Region secured a further £8.1m to support local businesses in October 2021 and brought forward a further £1.9m of support for omicron-hit hospitality and leisure businesses in the spring. Initially targeted at the hard-hit hospitality and retail businesses, the grants were later made available to all businesses with a 40% cut in their sales or revenue. The Combined Authority worked closely with the city region's six local authorities to ensure the money reached the businesses that needed it most, approving more than 28,000 funding applications. More specific financial support included the [LCR Music Support Fund](#) and [LCR Film Production Fund](#).

The £150,000 Music Fund supported more than 50 businesses, including venues, studios and promoters, through the pandemic. It provided urgent support to microbusinesses and SMEs, many that were at risk and not eligible for government support.

The £2m Film Production Fund directly supported six high-quality TV programmes filmed in the Liverpool City Region. These included Jimmy McGovern's gritty prison drama '[Time](#)' starring Sean Bean and Kirkby actor Stephen Graham, who also starred in '[Help](#)' alongside Liverpool's Jodie Comer. This year's hit BBC series [The Responder](#), starring Martin Freeman and written by local ex-police officer Tony Schumacher, also benefited from the fund.



- Liverpool often doubles as New York

Managed by the city council's Liverpool Film Office, the fund was forecast to generate £12m of spending in the city region and led to 455 full time jobs - providing a much-needed boost to the pandemic-hit economy. It also led to the creation of 29 training places as the film boom was felt across the city region with significant activity in Halton, Wirral and Sefton as well as Liverpool. The fund helped ensure social value with the involvement of local crew and facilities - building the expertise, reputation, skills base and capacity of the local film sector.

Last Autumn, the Combined Authority added a further £1m to the fund which was not only a commercial success: both [Time and Help scooped top awards at this year's Baftas](#). With a growing reputation, Liverpool City Region's ambition to become the 'Hollywood of the North' was further enhanced by the opening of [The Depot](#) - two 22,000 sq ft film and TV studios off Liverpool's Edge Lane. The Combined Authority has committed £17m to develop The Depot and larger studios in the adjacent Littlewoods building.

Financial backing for culture and creativity also came from other Combined Authority sources. The [£3m Future Innovation Fund \(FIF\)](#) supported Liverpool City Region's small and medium sized enterprises - enabling businesses to innovate, adapt and diversify in response to the pandemic. Birkenhead community music venue and skills hub [Future Yard](#) was one of the projects to benefit - providing industry-led training for local young people, a 350-capacity live venue, 11 music studios, a workspace and a café/bar.

A Skills Action Plan identified the key skills required to help the sector survive which led to training via the Kickstart and Be More programmes as well as employer-led schemes via City and Guilds.

“I think having a City Region Music Board which is really engaged, means that the sector's got representation so that we can shape the response to Covid.”

- **Craig Pennington**

Future Yard



[Play the video](#)

**IN FOCUS: EUREKA!
SCIENCE + DISCOVERY**

- WIRRAL



- An exhibit takes shape at Eureka!
Science + Discovery

EUREKA! SCIENCE + DISCOVERY, WIRRAL

Over the last year, work has continued on Eureka! Science + Discovery - a brand-new attraction that will open at Seacombe Ferry Terminal in autumn this year.

Supported with £6.4 million from the Combined Authority, Eureka! Science + Discovery, combines the interactive approach of the award-winning Eureka! in West Yorkshire with 21st century science and discovery centre innovation.

The new attraction has been co-created with local children aged 7-14 years old and explores how Science, Technology, Engineering, Arts and Mathematics (STEAM) influence and shape their lives.

Eureka! Science + Discovery is an important part of wider plans to revitalise Birkenhead and, in particular, the Left Bank area. The attraction is being created on the existing Seacombe Ferry Terminal and replaces the previous Spaceport attraction, allowing the Mersey Ferries to link the new attraction to the Liverpool Waterfront.

Eureka! The National Children's Museum opened in July 1992 as the UK's first and only dedicated children's museum and remains so today, welcoming an average of 300,000 family and school visitors each year and more than eight million visits since opening.



- Mayor Steve Rotheram with
Eureka! Chief Executive
Leigh-Anne Stradeski

PORTFOLIO HOLDERS AND DEPUTY PORTFOLIO HOLDERS DURING 2021-22

Business Support	Criminal Justice	Transport & Air Quality	Inclusive Economy & Third Sector	Culture, Tourism and The Visitor Economy
Asif Hamid MBE, LCR LEP	Emily Spurrell	Cllr Liam Robinson	Cllr Janette Williamson	Cllr Mike Wharton
Cllr Marion Atkinson		Cllr Gordon Friel	Cllr Kate Groucutt	Cllr Shelley Powell
Climate Emergency & Renewable Energy	Housing & Spatial Framework	Digital Connectivity & Inclusion	Education, Skills, Equality and Diversity	Policy, Reform and Resources
Cllr David Baines	Cllr Graham Morgan	Cllr Ian Maher	Mayor Joanne Anderson	Mayor Steve Rotheram
Cllr Gill Wood	Cllr Trish Hardy	Cllr Laura Robertson-Collins	Cllr Louise Whitley	Cllr Carla Thomas



IN MEMORY OF:

COUNCILLOR GORDON FRIEL
TRANSPORT & AIR QUALITY



**LIVERPOOL
CITY REGION**
COMBINED AUTHORITY

METROMAYOR
LIVERPOOL CITY REGION

